
LEMPERTZ

1845



The Papp Collection
of Netsuke II
7 December 2018 Cologne
Lempertz Auction 1124



The Papp Collection of Netsuke II
7 December 2018 Cologne
Lempertz Auction 1124



Preview

Cologne

Saturday 1 December, 10 am – 4 pm

Sunday 2 December, 11 am – 4 pm

Monday 3 – Wednesday 5 December, 10 am – 5.30 pm

Thursday 6 December, 10 am – 4 pm

Sale

Cologne

Friday 7 December 2018

ca. 3 pm

The Papp Collection of Netsuke II

Lot 255 – 434

The auction will be streamed live at www.lempertz.com

Please note that objects containing protected materials, such as ivory, require a CITES licence for export outside of EU contract country.

We would like to inform you that such licenses are usually not granted.

THE PAPP COLLECTION OF NETSUKE



Fig. 1 Gertrud Papp. Around 1980

Lempertz is proud to present the first part of the Papp collection of netsuke, assembled in the years from 1960 until 2000 by Gertrude Papp (1920–2017).

In Germany over the past few decades, many private collections have been built up and dispersed. The Kurt Robert Jordan collection of over 800 pieces was sold partly through Lempertz in 1986 and 1991, whilst the Hans Jatzlau collection of over 300 netsuke was offered at Lempertz in 2005 accompanied by Jatzlau's charming netsuke drawings. More recently, the Kolodotschko collection has achieved worldwide fame through five consecutive Lempertz sales. With this catalogue we are proud to have been trusted with yet another special collection full of quality and surprises: The Papp collection.

Collector's interests naturally vary. Some specialize in a particular subject matter such as sumo, shishi, snails or porcelain, some collect only the highest quality or fall for the peculiarities of Japanese humour. Some collectors are interested in the huge spectrum of legend and tales, whilst others again collect for pleasure and as their financial means allow.

The main aspect of Gertrud Papp's collecting was diversity. Subject, not the carvers' signatures, was the prime interest. The tall ivory figures of sennin, Chinese generals and legendary semi-human beings are most frequent. Fauna also features prominently, with a noticeable preference for hares, toads, birds and fish. Obviously fascinated by skulls and skeletons, we find an unusual number of them in the collection. Each netsuke was registered on a yellowish index card with a short, mostly typed or later handwritten description, price and value, and name of the person from or through whom it was acquired or received as a gift.

The index cards give a good overview of the development and stages of Gertrud's collecting activities which apparently all began with the netsuke of an Uzume, called "Stehaufmandel" (little man that stands up), a gift from Emil Damm in 1956. A successful and energetic businesswoman, Gertrud Papp bought regularly from dealers and fellow collectors.

Emil Damm (1913–1973) is thought to have started collecting netsuke before World War II and amassed, according to hearsay, about five to eight hundred pieces, buying mostly from auction houses in Germany and London in the 1960s with a particular interest in animals, mythological beasts and masks. He also collected sword fittings, kozuka and especially fuchi kashira, and to a lesser extent tsuba.

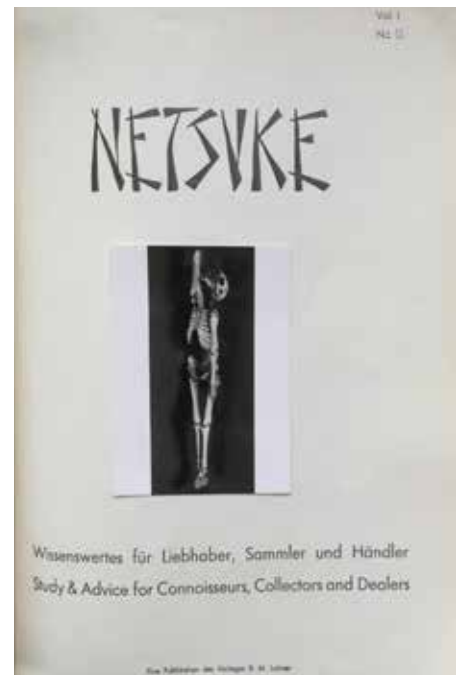


Fig. 2 Title page of "Netsuke", vol. 1, no. 12



Fig. 3 A showcase with shishi netsuke, hung in Gertrud's bedroom

After a slow collecting start on the part of Gertrud Papp, the first group of thirteen netsuke was acquired from the estate of Franz Weber of Vienna, shortly after his death. Dr.-Ing. Franz Weber (1900–1961), councillor at the Patent Office, a collector of meagre means but a *Liebhhaber*, is known mainly by his obscure mimeographed magazine with pasted-in black-and-white photographs called “Netsuke”, which saw only one volume with 12 issues published in 1961 (fig. 2). It featured articles in German and English by collectors such as Raymond Bushell, U. A. Casal and F. A. Türk, among others. Many of the illustrated netsuke belonged to Emil Damm although his name is mentioned only once, and of course Franz Weber himself.

Acquisitions from Jacobus van Daalen and Ohmura followed. Van Daalen (1922–2006), a Dutch collector and connoisseur of Japanese minor arts, was the expert of Japanese art for Kunsthaus Lempertz in Cologne between 1959/60 and 1972 and in charge of cataloguing. All kinds of different netsuke were bought from Ohmura, a dealer in Hamburg, from whom Christian Trumpf (1892–1973) also purchased, whose famous netsuke and inrō collection is today housed in the Lindenmuseum in Stuttgart. Further netsuke were acquired from Julius Katchen (1926–1969), Offermann & Schmitz, the tribal and Asian art dealer Ludwig Bretschneider (1909–1987) and Alexander Pollmer.

After the death of Emil Damm in 1973, a steady flow of netsuke as well as sword fittings (see main catalogue lots 184–247) from his collection entered the Papp collection via his wife Margarete, known as Grete, with whom Gertrud became good friends.

From 1978 onwards, Helmut Laudenbach (1942–2010) became the most important dealer for Gertrud. A private dealer, Laudenbach bought internationally, including in Japan, and also sold contemporary netsuke by Japanese and European carvers. In her most intensive collecting years, Gertrud purchased from Laudenbach up to four times a year.

After a quarter of a century of passionate collecting, Gertrud's buying activities started to slow down, but her enthusiasm not. Throughout her life, Gertrud Papp showcased the netsuke in her home to be enjoyed by herself, her family, friends and visitors. Her passion was infectious, her interest and joy for these carvings palpable to all she met. So much so that both her sons Dr. Florian Papp and Prof. Dr. Christoph Papp have slowly continued to expand the collection.



255

255 **An ivory netsuke of a sennin with a shishi.** 18th century

The long-haired and bearded sennin stands turned to the left, supporting a shishi at his shoulder and grabbing the animal by its tail.

Height 8.1 cm

Provenance

Purchased from Anne Roselt,

Cologne

Coll. no. 663 (printed and handwritten)

€ 800 – 1.000



256

256 **An ivory netsuke of a bearded sennin.** Early 19th century

The long-haired and bearded sennin stands bare-footed with the right hand raised in a gesture of surprise, the left hand grabbing the tip of his long beard.

Height 8.5 cm

Provenance

Purchased from Helmut Laudenbach,

Berg, February 1978

Coll. no. 615 (handwritten)

€ 600 – 800



257

257 **An ivory netsuke of a bearded Tōbōsaku Sennin.** Late 18th century

The bearded sennin stands in balance on one leg and holds a leafy peach branch bearing a huge peach.

Height 6.6 cm

Provenance

Purchased from Helmut Laudenbach,

February 1978

Coll. no. 622 (handwritten)

€ 600 – 800



258 **An unusually large Kyoto school ivory netsuke of Gama Sennin, by Masaharu.** Late 18th century

The long-haired sennin sits with one leg raised, the loosely worn robe revealing his pot-belly, a toad seated on his shoulder. The eyes of the animal of black horn. Signed Masaharu in an oval reserve.

Height 5.2 cm; width 5.7 cm

Provenance

Presumably Collection Koch, The Netherlands, sold at Hauswedell, Hamburg, 4.6.1962, lot 515

Collection Emil Damm, Munich

Through Grete Damm, March 1983

Coll. no. 525 (handwritten)

€ 1.000 – 1.400



259



260

- 259 **A boxwood netsuke of a bearded Tekkai Sennin.**
Late 18th/early 19th century

The long-haired and bearded sennin stands bare-footed on one leg clutching a gnarled staff, the right hand is raised in a gesture of surprise, a gourd hangs from his belt.
Height 9.3 cm

Provenance

Purchased from Helmut Laudenbach, Berg,
February 1997
Coll. no. 432 (handwritten)

€ 800 – 1.200

- 260 **An ivory netsuke of a grumpy Chinnan Sennin.** Early 19th century

The bearded sennin standing on one leg and turning to the right holds a staff with both hands, on his back a large tattered sedge hat.
Height 6.6 cm

Provenance

Purchased from Helmut Laudenbach, 12.9.1978
Coll. no. 658 (handwritten)

€ 600 – 800

261 **An ivory netsuke of Chôkarô Sennin.**

Late 18th/early 19th century

The bearded sennin in Confucian attire stands upright raising a gourd above his head from which a horse has jumped, in his left hand a Chinese-style fan.

Height 7.6 cm

Provenance

Purchased from Helmut Laudenbach, Berg,
March 1980

Coll. no. 586 (handwritten)

€ 500 – 700



261

262 **An ivory netsuke of Chôkarô Sennin.**

First half 19th century

The long-haired and bearded sennin sits with one leg raised, shouldering a large gourd from which emerges a horse which rests its hooves on Chôkarô's knee.

Height 3.9 cm

Provenance

Purchased from Helmut Laudenbach, Berg,
30.4.1979

Coll. no. 811 (handwritten)

€ 700 – 900



262



263 **An ivory netsuke of Kan'u.** Early 19th century

The bearded Chinese general stands holding his halberd and stroking his beard, the robe displaying a cloud pattern reserved from a stippled ground. Height 8.1 cm

Provenance

Purchased from Ohmura, Hamburg
Coll. no. 766 (printed and handwritten)

€ 400 – 600

264 **An excellent Edo school boxwood netsuke of a portly Kan'u, by Minkoku.**
First half 19th century

The bearded Chinese general stands proudly holding his halberd, his robe with a cloud pattern held in place by an ornate belt covering his intricately rendered armour, the right sleeve hanging loose exposing the shoulder armour. Signed Minkoku in an oval reserve.

Height 8.2 cm

Provenance

Property of a lady, sold at Sotheby's,
London, 6.12.1965, lot 28
Collection Emil Damm, Munich,
acquired at the above auction
Through Grete Damm, Munich, 1975
Coll. no. 938 (printed)

€ 3.000 – 4.000





265

265 A wood netsuke of Shōki, by Tomochika.
Early 19th century

Standing with one leg slightly raised, and lifting his robe with the left hand in order to have more freedom of movement, a drawn sword in his right hand, the scabbard visible at his back.

Height 6.5 cm

Provenance

Purchased from Ohmura, Hamburg

Coll. no. 813 (printed)

€ 500 – 600



266

266 A boxwood netsuke of Shōki. Early 19th century

The demon queller stands on one leg with wind-swept beard and drawn sword in his right hand, looking up at the oni sitting on top of his large travelling hat and pulling the oni's arm which reaches through a hole in the hat. The oni's horns of bone.

Height 7.6 cm

Provenance

Purchased from Ohmura, Hamburg, May 1966

Coll. no. 706 (printed and handwritten)

€ 600 – 800



267 A good ivory netsuke of a reclining servant of Seiōbō.
18th century

The head propped up on her left hand, she holds a basket
in her right hand, the robes with a shibori-type pattern in
cloud-shaped reserves.

Height 3 cm; length 7.5 cm

Provenance

Purchased from Alexander Pollmer?

Coll. no. 936 (printed and handwritten)

€ 1.000 – 1.400



268

268 **A good boxwood netsuke of a servant of Seiōbō.** 18th century

Standing turned to the right and holding a peach, a basket hanging from her left arm. Inscribed Mitsutada.

Height 7.1 cm

Provenance

A gift from Grete Damm, Munich, 1.7.1992
Coll. no. 442 (handwritten)

€ 600 – 800



269

269 **A charming boxwood netsuke possibly of Bunkan Zenshi.** Early 19th century

Sleeping and seated at ease and leaning onto the back of a large recumbent tiger. Eye pupils of black horn.

Height 2.8 cm; width 4 cm

Provenance

Through Grete Damm, Munich, June 1980
Coll. no. 578 (printed and handwritten)

€ 600 – 800

- 270 **A small ivory netsuke possibly of Bunkan Zenshi.**
Early 19th century

With eyes closed and seated at ease on the back of a large recumbent tiger and holding the animal's long tail.

Height 3.3 cm; width 3.3 cm

Provenance

Purchased from J. van Daalen, December 1965

Coll. no. 710 (printed and handwritten)

€ 400 – 600



270

- 271 **A walrus tusk netsuke of Bunkan Zenshi.**
Second half 19th century

The old tonsured monk Bunkan Zenshi sits with one leg pendant on a rock, wearing a robe and a large kesa which covers the leg resting on the rock, a large tiger sitting beside him.

Height 4.2 cm

Provenance

From Sissy's collection,

Coll. no. 730 (printed and handwritten)

€ 400 – 600



271

- 272 **An interesting ivory netsuke of a Kakkyô.**
19th century

Carved in openwork within the frame of a screen, Kakkyô stands beneath a pine branch, happily surprised at digging up a cauldron containing a treasure.

This is an illustration of one of the Twenty-four Paragons of Filial Piety. The poor peasant Kakkyô decided to sacrifice his new-born child in order to be able to feed his ancient mother. When he started to dig the grave he discovered a treasure.

Height 4.5 cm

Provenance

Through Grete Damm, October 1981

Coll. no. 546 (handwritten)

€ 400 – 600



272



273

273 A large and unusual walrus tusk near-manjū of Yōkō. 19th century

Carved partly in openwork with a fierce tiger attacking Yōkō on one side and an old man sitting by a rock with a teapot on the other. The eye pupil of the tiger inlaid in metal.

This is one of the Twenty-four Paragons of Filial Piety. Yōkō threw himself at the tiger thereby enabling the old man to flee, the son on the other hand was devoured by the tiger. Width 4.9 cm

Provenance

Purchased from Helmut Laudenbach, Berg, 14.9.1985

Coll. no. 484 (printed and handwritten)

€ 800 – 1.000



274

274 An ivory netsuke of a comical Chinese man. Early 19th century

Standing with head slightly turned to the right and stroking his beard, pulling his sleeveless coat to the side to reveal a tiger skin apron. Height 8.9 cm

Provenance

Purchased from J. van Daalen, December 1965
Coll. no. 792 (printed and handwritten)

€ 400 – 500

275 **A fine boxwood netsuke of an ashinaga and a tenaga.** Early 19th century

Represented as curly-haired South Sea Islanders sitting close to each other, the ashinaga with a drum at his hip has drawn his legs up tightly towards his body, while the tenaga sits at his side and places his hands on the knees of his friend.

Height 3.6 cm

Provenance

Purchased from Helmut Laudenbach, Berg, 7.4.1987
Coll. no. 465 (handwritten)

€ 800 – 1.000



275

276 **A long stag antler netsuke of an ashinaga and a tenaga.** 19th century

An ashinaga wearing only a straw apron stands tall, carrying a long-haired tenaga on his shoulders, who has caught a fish with his long right arm.

In this netsuke ashinaga and tenaga are paragons of mutual aid.

Height 13.3 cm

Provenance

From Grete Damm, 1.5.1979
Coll. no. 862 (handwritten)

€ 600 – 800



276



277

277 **A fine kaki wood netsuke of a muscular kuronbôjin, by Issan.** Early 19th century

Reclining and looking upwards, the body and legs somewhat contorted, wearing a cloth apron and with curly hair and a beard. Signed Issan.

Height 2.4 cm; width 3.8 cm

Provenance

Purchased from Ohmura, Hamburg, December 1964

Coll. no. 754 (printed and handwritten)

€ 500 – 700



278

278 **A boxwood netsuke of a Dutchman with a child.** Early 19th century

Slightly bent forward under the weight of the boy he is carrying on his back, the Dutchman wears wide trousers, a buttoned-down robe and a sleeveless vest. The buttons of black wood. Height 5.2 cm

Provenance

Sotheby's, London, 31.5.1965, lot 62 (lot of 2)
Collection Emil Damm, Munich, acquired at the above auction

A gift from Grete Damm, Munich, 1.7.1979

Coll. no. 425 (handwritten)

€ 600 – 800

279 **A unusual netsuke of Kannon Bosatsu.**

Late 19th century

Seated in meditation on a lotus throne, a lotus flower in the left hand, the right hand raised, all within an open lotus flower with a large swastika underneath. Diameter 4.4 cm

€ 400 – 500



279

280 **A fine kagamibuta of rakan Handaka Sonja.**

Mid-19th century

The disc of shibuichi showing the rakan holding a staff and a dragon in waves. Details of copper and gold. Bowl of ivory. Height 4.1 cm

Provenance

Purchased from Alexander Pollmer, Munich ?

Coll. no. 955 (printed and handwritten)

€ 300 – 400



280

281 **A wood and lacquer okimono-type netsuke of Daruma after meditation.** Late 19th century

Sitting with arms and legs stretched out and yawning heartily, the head covered by his red robe. Eyes and teeth of bone, eye pupil of black horn. No himotōshi.

Height 3.8 cm; length 5.8 cm

Provenance

Purchased from the estate of Dr. Franz Weber, Vienna, May 1961

Coll. no. 677 (printed and handwritten)

€ 300 – 400



281



282

282 A boxwood netsuke of an Onna-Daruma doll.
Late 19th century

The body completely covered by the robe, the face of ivory, the base plate can be removed to reveal the genitals carved of ivory. The single himotōshi opening lined with green stained bone. Together with an amber-coloured ojime and a coin.

Height 4.1 cm

Provenance

Purchased from Ohmura, Hamburg,
March 1971

Coll. no. 873 (printed and handwritten)

€ 400 – 600



283

283 An unusual ivory netsuke of a large oni.
18th century

Seated with a fierce expression and big horns on a flattened rock, placing his left hand on his knee, his loin cloth held in place by a cord.

Height 5.4 cm

Provenance

Purchased from Alexander Pollmer, Munich,
September 1972

Coll. no. 915 (printed and handwritten)

€ 900 – 1.200

284 **A good and amusing ivory netsuke of two wrestling onis.** Early 19th century

The heavy-set oni stands with lips firmly pressed together and wearing a tiger skin loincloth, about to execute the kawazu throw by lifting his opponent by his belt, who is about to throw his rival off-balance with his right leg. The eye pupils of black horn.

Height 6.3 cm

Provenance

Coll. no. 648 (handwritten)

€ 1.400 – 1.600





285

- 285 **A rare and interesting wood netsuke of an oni with a reliquary, by Awataguchi.** First half 19th century

Wearing a tiger skin loincloth and breeches, the muscular oni holds the reliquary with a loose ball inside which he has stolen from Idate, the oni's face with a fierce expression. Eye pupils inlaid. Signed Awataguchi.

Awataguchi, also the name of a place in Kyoto, is a rarely seen signature.
Height 2.8 cm

Provenance

Purchased from J. van Daalen, Utrecht, April 1970
Coll. no. 791 (printed and handwritten)

€ 600 – 900



286

- 286 **An amusing wood netsuke of an oni at setsubun, by Ikka?** First half 19th century

A muscular oni rolls up into a ball and pulls a large sedge hat over his back in order to protect himself from the bean shower. The beans of bone. Signed Ikka?

Height 2.8 cm

Provenance

Collection Elaine Ehrenkranz (by repute)
Purchased from Helmut Laudenschlag, Berg,
March 1980
Coll. no. 581 (handwritten)

€ 700 – 900



287

- 287 **An amusing wood netsuke of an oni and Shôki, by Chikusai.** Second half 19th century

A long-haired oni wearing a tiger skin loincloth crawls over a large basket and looks down through two holes at Shôki who lies prostrate underneath, his sword piercing the basket. The buttons of black horn, the oni's horns of bone (possibly replaced).

Height 2.9 cm; width 4.2 cm

Provenance

Purchased from Helmut Laudenschlag, Berg,
March 1980
Coll. no. 582 (handwritten)

€ 700 – 900



288



289



290

288 **An unusual ivory netsuke of an oni.**
Early 19th century

The long-haired oni has captured his pursuer and carries him off in a large bag with Shôki's angry face looking out from an opening. The eye pupils of black horn.

Height 4.4 cm

Provenance

Purchased from Helmut Laudenbach, Berg, August 1980

Coll. no. 571 (handwritten)

€ 500 – 600

289 **An amusing Edo school ivory netsuke of three oni at setsubun, by Gyokkôsai.** Mid-19th century

Falling over each other as they flee from the exorcising shower of beans, each with two or one horn. The beans of brass (one replaced). Signed Gyokkôsai in an oval reserve.

Height 3.4 cm

Provenance

Purchased from Alexander Pollmer, Munich, July 1991

Coll. no. 444 (handwritten)

€ 500 – 600

290 **An unusual kagamibuta of Hotei.**
Mid-19th century

The brass plate, possibly the top of a kashira, decorated in iro-e takazôgan with Hotei tying up two jewels in a furoshiki. The "bowl" consists of a diagonally cut cross section of a narwhal tooth.

Length 6.6 cm

Provenance

Purchased from Ohmura, Hamburg, December 1966

Coll. no. 842 (printed and handwritten)

€ 300 – 400



291



292



293

291 A fine large corozo nut netsuke of a god of good luck, by Masaharu. Mid-19th century

Carved with the highly polished and friendly face of either Hotei or Daikoku looking out from the skin of the nut displaying traces of black lacquer. Signed Masaharu in a cartouche reserved from the bark-like skin.

Masaharu specialized in the carving of vegetable ivory of the corozo nut. "A vegetable ivory nut, face of Hotei, signed Masaharu" is listed in the W. L. Behrens Netsuke catalogue under no. 4292. Meinertzhagen supposes that these nuts were "obtained from the Dutch settlers at Nagasaki during the early part of the 19th century." (MCI, p. 409)
Height 4.3 cm

Provenance
Coll. no. 972 (printed and handwritten)

€ 500 – 600

292 A fine Edo school walrus tusk netsuke of Daikoku, by Shō...sai. Mid-19th century

Sitting with one leg pendant on a rice bale with a tiny rat inside, shaking three jewels from his hammer. Signed Shō...sai in an oval reserve.
Height 3.8 cm

Provenance
A gift from Sissy
Coll. no. 949 (printed)

€ 500 – 600

293 A wood netsuke of Fukurokuju, by Tamahiko. 19th century

Standing with hands covered by his long robe, with a high pate and thick earlobes. Signed Tamahiko.
Height 7.2 cm

Provenance
Purchased from Ohmura,
Hamburg
Coll. no. 827 (printed)

€ 300 – 400

294 **A boxwood netsuke of Jurôjin.** 19th century

Seated with a crane on his thigh and holding a jui sceptre in his left hand. Inscribed Masanao.
Height 5.7 cm

Provenance

Purchased from Julius Katchen, Paris, January 1962

From Grete Damm, Munich, 1998

Coll. no. 198 (printed), no. 430 on the index card

€ 400 – 500



294

295 **An ivory netsuke of a laughing Fukurokuju with a karako.** Mid-19th century

Standing with a staff and a raised Chinese-style fan, to his side a kneeling boy with a scroll.
Height 4.6 cm

Provenance

Purchased from Offermann & Schmitz, Cologne, at the Deutsche Kunst- und Antiquitätenmesse, Munich, November 1971

Coll. no. 886 (printed and handwritten)

€ 500 – 700



295



296 **A fine ivory netsuke of Jurôjin.**
Early 19th century

The god stands stroking his long beard and holding a peach branch, with a stag standing on his shoes and looking up.
Height 10.1 cm

Provenance
Emil Damm, Munich
From Grete Damm, Munich, 19.8.1987
Coll. no. 456 (printed and handwritten)

€ 1.200 – 1.600

297 **A kagamibuta of Okame, by Kômin.**

Mid-19th century

The disc of rôgin engraved with Okame with a court fan, seen through a round window, below a shimenawa. Signed Kômin. Bowl of ivory. Diameter 3,9 cm

Provenance

Coll. no. 981 (printed and handwritten)

€ 300 – 400



297

298 **An unusual and small lacquered wood netsuke of Okame.** 19th century

Seated and crouched forward, the hands placed to both sides of the obi tied in front. The face of natural wood, the openings of the himotôshi lined with green-stained bone.

Provenance

A gift from Emil Damm, Munich, 1956, the first netsuke of the Papp collection called "Stehaufmandel"

Coll. no. 619 (printed and handwritten)

€ 200 – 300



298



299 **A fine boxwood netsuke of Ryûjin's attendant.**
Late 19th century

Standing upright with a dragon climbing up his back and holding a bowl with a jewel that regulates the tide, ribbons with a shippô ornament hanging from his arms. Inscribed Shuzan in an oval reserve.

Height 10.1 cm

Provenance

Purchased from Julius Katchen, November 1974?

Coll. no. 738 (printed and handwritten)

€ 1.200 – 1.500



300



301



302

300 An ivory netsuke of tengu.

Early 19th century

The crow-headed tengu sits in kamishimo with his claw hands resting on his thighs. The eye pupils of black horn.

Height 3.4 cm

€ 400 – 600

301 An unusual and rare bronze netsuke of a tengu no tamago.

Early 19th century

The crow-headed tengu with a yamabushi's cap looks out from the egg while at the other end a foot has broken through the shell.

Length 4.5 cm

Provenance

Purchased from Helmut Laudenschlag, Berg, March 1980
Coll. no. 587 (handwritten)

€ 300 – 400

302 A boxwood netsuke of Saigyô Hôshi.

First half 19th century

Standing with head slightly raised, a bundle tied around his back and holding a large travelling hat.

Height 5.6 cm

Provenance

Purchased from the estate of Dr. Franz Weber, Vienna, May 1961
Coll. no. 646 (printed and handwritten)

€ 250 – 350



303

303 An ivory netsuke of a warrior on horseback.
19th century

Riding through waves and tightly holding on to the reins, with a sword at his back, the towel wound around the head giving him the appearance of Benkei, whilst the subject is reminiscent of the Chinese Emperor Gentoku riding through the river Dankai. Height 3.4 cm; length 5.2 cm

Provenance

From Grete Damm, Munich, November 1980

Coll. no. 567 (handwritten)

€ 600 – 800



304

304 An ivory netsuke of Ushiwakamaru fighting with a giant carp. Mid-19th century

The young Yoshitsune with ornate hair-do stands next to a rising carp, one foot placed on the fish's tail and grabbing the animal under its fins. The carp's eye pupils of black horn. Height 4.4 cm

Provenance

Collection Hans Habe (by repute)

Purchased from Helmut Laudenbach, Berg, 1.4.1978

Coll. no. 984 (handwritten)

€ 500 – 700



305

305 An Edo school ivory peg manjû of Benkei.
Mid-19th century

Carved in sunken relief with Benkei as a yamabushi in typical attire holding a staff and with a long sword, in front of him a peasant boy in a happi coat, on the reverse his basket and a sickle. Diameter 5.3 cm

Provenance

A gift of Grete Damm, Munich, 7.7.1987

Coll. no. 457 (handwritten)

€ 500 – 600

306 **An ivory netsuke of Saigyô Hôshi admiring Mount Fuji.** Early 19th century

Sitting with a bundle tied around his back, the priest-poet sits at the foot of Mount Fuji and looks up at its peak.

Height 2.6 cm; width 4.4 cm

Provenance

Through Grete Damm, Munich, October 1982
Coll. no. 529 (handwritten)

Literature

Franz Weber, *Der Fujisan – Mount Fuji*, in:
Netsuke, Vol. 1, No. 1, (1966), p. 2, fig. 2

€ 300 – 400



306

307 **An interesting boxwood netsuke of a samurai catching a thief, by Masayoshi.** Second half 19th century

A samurai with two swords holds down a thief with his bare foot and grabs him by the arm while drawing his sword, whilst the thief, in a kosode and jacket, holds on to a lantern and a stolen money pouch dangling from his arm. On a flat irregular base. Signed Masayoshi. Height 5.1 cm; length 4.9 cm

Provenance

Purchased from Helmut Laudenbach, Berg,
January 1989
Coll. no. 567 (handwritten)

€ 700 – 900



307



308

308 A boxwood netsuke of Kiyohime and the bell of Dôjôji. Second half 19th century

Kiyohime has changed into a huge hannya with horns, claw hands and feet and a dragon's tail, and is shown climbing over the temple bell. The eye pupils of light brown glass. Height 5.5 cm

Provenance
Coll. no. 978 (handwritten)

€ 600 – 800



309

309 An amusing Edo-school ivory netsuke of two monks next to a bell, by Shôunsai. Mid-19th century

Both seated to either side of a large bell and covering their ears, one of the monks with prayer beads. Signed Shôunsai.

The bell could be an allusion to the bell of Miidera, carried up Mount Hiei by Benkei so that the sound of the bell would bring pleasure to the monks, or the bell of Dôjôji underneath which Anchin burned to death and is now mourned by his fellow monks. Height 2.4 cm; width 4.6 cm

Provenance
From Grete Damm, Munich, April 1977
Coll. no. 984 (handwritten)

€ 500 – 700

310 **A boxwood netsuke of a laughing shrine attendant with a huge bell.** Early 19th century

Wearing an eboshi and standing on one leg, the other raised happily into the air, pulling a huge bell by a rope.

Length 3.2 cm; length 4.3 cm

Provenance

Through Grete Damm, Munich, May 1981

Coll. no. 554 (handwritten)

€ 300 – 500



310

311 **An ivory netsuke of a sculptor, by Sekkō.** Mid-19th century

Sitting with hammer and chisel behind the almost completed sculpture of a shishi with a ball, the artisan wearing a jacket (happi) with a large character on the back, the right sleeve slipped off the shoulder in order to have more freedom of movement, a typical feature for a worker. Signed Sekkō.

Height 3 cm; length 4.4 cm

Provenance

Purchased from Alexander Pollmer, Munich,

August 1972

Coll. no. 914 (printed and handwritten)

€ 600 – 800



311

312 **A boxwood netsuke of a street puppeteer.** 19th century

Standing with a wooden box hanging from his neck with an outstretched weasel on top, the front of the box painted with patterns in red lacquer, traces of lacquer to his cap.

Itinerant puppeteers (kairaishi) carried puppets in a box, while at a certain point during their performance a weasel (yamaneko itachi) was set loose to entertain the audience. This rare but known netsuke motif was interpreted on the Papp index card as a seller of a young seal (sic!) as an aphrodisiac. This information came from Ohmura.

Height 5.9 cm

Provenance

From Grete Damm, February 1976, who had just acquired it for DM 1300 from the wife of a man who collected rare subjects.

Coll. no. 948 (printed and handwritten)

€ 500 – 700



312



313

313 A small boxwood netsuke of a disappointed rat catcher, by Ichimin. Mid-19th century

Crouching over a large rice measure (masu), holding a pestle and wearing only a loose fundoshi while a rat has escaped and sits on his shoulder.
Height 2.5 cm; length 3.5 cm

Provenance

Collection von Waldthausen

Lindenmuseum Stuttgart, acc. no. L 1436/487 – 92.196

Sold by Ludwig Bretschneider (1909-1987) Munich, Deutsche Kunst- und Antiquitätenmesse, Munich, October 1969 (to Emil Damm)

A gift from Grete Damm, Munich, 1.7.1997

Coll. no. 415 (printed) and no. 431 (handwritten)

€ 400 – 500



314

314 A boxwood okimono-type netsuke of a rat catcher. Late 19th century

Standing wearing only a fundoshi and pressing down a rice measure (masu) on a small rat, the head and tail visible, while another rat has escaped and sits on his back, the man's face with an expression of anger and exertion. All eye pupils accentuated in black, the teeth of both rats of bone.

Length 5.5 cm

Provenance

Purchased from Alexander Pollmer, Munich, 1973

Coll. no. 948 (printed and handwritten)

€ 400 – 500



315

315 A stag antler netsuke of a sumô wrestler with a huge gourd. 19th century

Standing in balance with feet set wide apart and shouldering a double gourd three times his size.
Height 4.7 cm

Provenance

Purchased from Ohmura, Hamburg, March 1972

Coll. no. 893 (handwritten)

€ 200 – 300

382343

316 **A boxwood netsuke of a sleeping peasant.**
Mid-19th century

Crouching on a folded straw mat, the head placed on his arms, a sickle with a blade of silvery metal and a bone handle inserted into his belt. Height 2.6 cm; length 4.2 cm

Provenance
Purchased from Alexander Pollmer, Munich
Coll. no. 944 (printed and handwritten)

€ 500 – 700



316

317 **An ivory netsuke of a resting peasant woman.** Mid-19th century

Sitting on a saddled horse smoking a pipe and holding a pouch with the characters hi yo kokoro (beware of fire), a sickle behind her, whilst a boy sits at her feet with the handle of a sickle?, on an irregular flat base. Height 5.2 cm

Provenance
Purchased from Helmut Laudenbach, Berg,
12.9.1978
Coll. no. 659 (handwritten)

€ 500 – 700



317

318 **A very impressive and large seal netsuke of a baku.** Early 19th century

Seated on its haunches on a flat oval base with a single character carved in relief underneath, with a shishi-like mane and tail, the huge head with a small rolled-up trunk and open mouth raised high, the single horn touching its back.
Height 8.2 cm

Provenance

Coll. no. 977 (printed and handwritten)
(no index card)

Literature

Compare a nearly identical piece illustrated in the MCI, p. 1028.

€ 3.000 – 4.000





319 A very fine Nagoya school wood netsuke of a kirin, by Ikkan.
Mid-19th century

Reclining, the head with the features of a goat with two horns and two very long whiskers turned back to the left, flames emanating from the joints of the forelegs. Signed Ikkan in an oval reserve.

Height 2.9 cm; width 3.8 cm

Provenance

Purchased from Helmut Laudenbach, Berg, 10.8.1986

Coll. no. 474 (handwritten)

€ 3.000 – 5.000



320

320 An elegant ivory seal netsuke of a kirin.
19th century

Seated on its haunches with one foreleg slightly raised, head turn backwards and the short beard resting on its back, the characters completely ground down. At the side a short inscription signed Muneharu (Sōshun) horu. Height 5.2 cm

Provenance

Purchased from Helmut Laudenbach, Berg,
30.4.1979

Coll. no. 815 (handwritten)

€ 600 – 800



321

321 A nearly black horn seal netsuke of a kirin.
19th century

Seated on its haunches, neck twisted and head turn backwards, the thin beard hanging down almost to the base, the four characters ground down.

Height 5 cm

Provenance

Purchased from Ohmura, Hamburg, February
1971

Coll. no. 871 (handwritten)

€ 300 – 400

322 A very good large ivory netsuke of a dragon. Early 19th century

Rising from waves, the scaly body forming a circle engulfed by large flames, the snout raised high. The eye pupils of brown horn.
Height 4.4 cm; width 5.2 cm

Provenance

Purchased from Helmut Laudenbach,
Berg, February 1979
Coll. no. 777 (handwritten)

€ 2.000 – 3.000



323 **A spectacular boxwood netsuke of a kirin, by Ryūjo.** Late 19th century

Seated on its haunches, head turn back, with the curly mane and tail of a shishi, the body covered by feather-like scales. The eyes, horn and teeth of bone, the eye pupils of black glass. Signed Ryūjo. Height 6 cm

Provenance

Purchased from Helmut Laudenbach, Berg, 3.7.1979

Coll. no. 991 (handwritten)

€ 1.400 – 1.800



324 **An attractive boxwood netsuke of a kirin.**
19th century

Seated on its haunches, howling and raising its dragon head with long whiskers and a single short horn, flames emanating from the joints. The eye pupils of black horn. Inscribed Tomotada. Height 9 cm

€ 1.200 – 1.500





325

325 An ivory netsuke of a coiled dragon.
Mid-19th century

The smooth body without scales slung into a flat oval shape, the head resting on the rolled-up tip of the tail and flames emanating from the joints.
Width 5.1 cm

Provenance
From Grete Damm, Munich, 1.7.1994
Coll. no. 440 (handwritten)

€ 600 – 800



326

326 A good Tanba school wood netsuke of a dragon, by Toyokazu. Mid-19th century

Coiled into an oval ryūsa manjū-type shape with a large head and an aggressively opened mouth. The eye of very light horn. Signed Toyokazu in an oval reserve.
Width 3.9 cm

Provenance
Purchased from Helmut Laudenbach, Berg, 30.4.1979
Coll. no. 808 (handwritten)

€ 700 – 900



327

327 A rounded rectangular manjū of a dragon.
Mid-19th century

Incised and stained with the large head of a dragon breaking through clouds. Inscribed Mitsuhiro with kaō.
Width 3.9 cm

Provenance
Purchased from Offermann & Schmitz, Köln, at the Deutsche Kunst- und Antiquitätenmesse, Munich, 1971
Coll. no. 887 (printed and handwritten)

€ 400 – 500

328 **A good large boxwood netsuke of a shishi.**

Late 18th/early 19th century

Seated with forepaws placed close together and scratching its shoulder with a hind paw, the tail placed to the side.

Height 4.5 cm

Provenance

Purchased from J. van Daalen, Utrecht,

December 1970

Coll. no. 866 (printed and handwritten)

€ 1.000 – 1.200



328

329 **An ivory netsuke of a mighty shishi.**

Late 18th/early 19th century

Seated, the head turned to the right with a very bushy mane and a broad, wide-open mouth.

Height 3.1 cm; width 4.8 cm

Provenance

Purchased from Ohmura, Hamburg, August 1972

Coll. no. 903 (printed and handwritten)

€ 700 – 900



329

330 **A good ivory netsuke of a shishi.**

Early 19th century

Seated with forepaws placed close together, turned slightly to the right and scratching its chin, the tail and mane fanning out and covering shoulders and back. The eye pupils of brown horn.

Width 3.9 cm

Provenance

Purchased from Ohmura, Hamburg, 1972

Coll. no. 818 (printed and handwritten)

€ 1.500 – 2.000



330

331 **An ivory netsuke of a mighty shishi.**
Early 19th century

Seated on its haunches, the head tilted and turned to the left, a large ball between its paws, and a loose ball in the wide-open mouth.

Height 4.8 cm

Provenance

Purchased from J. van Daalen, Utrecht,
5.6.1964

Coll. no. 660 (printed and handwritten)

€ 2.000 – 2.500





332 **An unusual ivory netsuke of a shishi.** Early 19th century

Standing with legs wide apart and head lowered to the ground, the tail raised high over its back, a loose ball in the wide-open mouth. The eye pupils of brown horn.

Height 4.4 cm

Provenance

Collection Werner Damm

Through Grete Damm, Munich, May 1983

Coll. no. 518 (printed and handwritten)

€ 1.200 – 1.500





333

- 333 **A good large ivory netsuke of a shishi.**
Early 19th century

Standing by a rock with a flat base, one forepaw raised, a loose ball in the wide-open mouth and a large loose ball inside the perforated and hollowed-out rock.

Height 4.4 cm; width 4.7 cm

Provenance

Purchased from Ohmura, Hamburg, July 1967

Coll. no. 639 (handwritten)

€ 800 – 1.000



334

- 334 **A good boxwood netsuke of a shishi, by Masamitsu.**
Mid-19th century

Seated on its tail which forms a flat base, the head turned to the right, between its paws a large brocade ball rendered in openwork with a loose ball inside.

The eye pupils of black horn. Signed Masamitsu in an area reserved from the hair engraving.

Height 3.5 cm

Provenance

Coll. no. 746 (printed and handwritten)

€ 700 – 900



335

- 335 **A fine very small ivory netsuke of a shishi.**
Mid-19th century

Seated, turned to the right and scratching its chin, a large loose ball in the wide-open mouth. The eye pupils of brown horn.

Height 2.6 cm

Provenance

Purchased from Helmut Laudenschlag, Berg,
August 1980

Coll. no. 573 (handwritten)

€ 400 – 500



336



337



338



339

- 336 **A fine very small Tsu school ebony netsuke of a shishi, by Tōmin.** Mid-19th century

Seated, the head alertly turned back to the right, protectively placing its paws over a large ball. The eyes of metal, the pupils of horn. Signed Tōmin with kaō.

Height 2.5 cm; length 3.4 cm

Provenance

Purchased from Helmut Laudenbach, Berg, December 1980
Coll. no. 562 (handwritten)

€ 700 – 900

- 337 **A fine small silver netsuke of a shishi.** Mid-19th century

Seated, the head turned to the right, protectively placing its paws over a huge gilt ball. Incised lines imitating characters underneath the ball.

Since the piece is too heavy to be used as a netsuke, it was most probably used as a paperweight (bunchin).

Height 2.8 cm; length 3.6 cm

Provenance

Purchased from Hartmann Rare Art at the Dallas Fairmont Hotel, October 1981
Coll. no. 543 (handwritten)

€ 300 – 400

- 338 **A large wood seal-type netsuke of a shishi.** 19th century

Seated with a curly mane and tail on a rectangular base in the manner of a koma-inu, the guardian dogs of Japanese shrines, the mouth slightly open.

Height 4.8 cm

Provenance

Collection Werner Damm
Through Grete Damm, Munich, May 1983
Coll. no. 517 (printed and handwritten)

€ 600 – 800

- 339 **A large wood seal-type netsuke of a shishi.** 19th century

Seated on a flat oval base, its chin resting on a large brocade ball rendered in openwork with a loose ball inside, the broad head framed by big curls.

Height 3.7 cm; length 5 cm

Provenance

Purchased from Poser, August 1965
Coll. no. 732 (printed and handwritten)

€ 600 – 800



340

340 A very good ivory netsuke of two bushy-haired shishi. Mid-19th century

Standing on an oval flat base, the larger animal turning its head towards the young animal standing beside it.

Height 3.2 cm

Provenance

Purchased from Helmut Laudenbach, Berg, February 1979

Coll. no. 793 (handwritten)

€ 1.000 – 1.500



341

341 A rare Edo school ivory okimono-type netsuke of a shishi, a tiger and a bear, by Tomochika. Second half 19th century

Sitting back to back, the shishi scratching itself, the tiger snarling and turning its head to the right, the bear placing its paws on the shishi's back. Signed Tomochika.

Height 3.3 cm; length 4 cm

Provenance

Purchased from Helmut Laudenbach, Berg, 20.11.1986

Coll. no. 468 (handwritten)

€ 1.000 – 1.500

342 **A large boxwood netsuke of a monkey in a chestnut.** First half 19th century

Emerging from a chestnut, head and forepaws outside of the fruit, the chestnut skin realistically rendered with vertical lines, the base with skin pimples in ukibori. The eye pupils of bone.
Height 3.4 cm

Provenance

Through Emil Damm ?, Munich

Coll. no. 975 (printed and handwritten)

€ 900 – 1.200



342

343 **A large okimono-type boxwood netsuke of a monkey and young.** Late 19th century

Sitting with head turned to the right and holding a fruit, probably a kaki, a smaller monkey sitting in front and holding onto the hind leg of the parent animal. The eye pupils of black horn.
Height 4.5 cm

Provenance

Purchased from von Bierstorfer Munich,

October 1984

Coll. no. 501 (handwritten)

€ 600 – 800



343

344 **An Osaka school ivory netsuke of a monkey, by Masatami.** Second half 19th century

Seated with mouth open as if yawning, between his paws a large kaki fruit with a thin branch and a leaf hanging from it. The eye pupils of glass, one green, one black. Signed Masatami in a rectangular reserve.
Height 3.9 cm

Provenance

Purchased from Helmut Laudenbach, Berg,

October 1978

Coll. no. 709 (handwritten)

€ 500 – 700



344



345

345 A large ivory netsuke of a grazing horse.

Early 19th century

Standing with head lowered, forelegs and hind legs placed wide apart, the respective hooves close together. The eye pupils of black horn. Inscribed Harutomo in a rectangular reserve.

Height 5.9 cm

Provenance

Purchased from Helmut Laudenbach, Berg, 22.2.1985
Coll. no. 493 (handwritten)

€ 900 – 1.200



346

346 A small ivory netsuke of a grazing horse.

Late 18th/early 19th century

Standing with all four hooves placed close together, the head lowered. The eye pupils of black horn.

Height 4.9 cm

Provenance

Purchased from Hartmann Rare Art at the Dallas
Fairmont Hotel, October 1981
Coll. no. 544 (handwritten)

€ 500 – 700



347

347 A small ivory netsuke of Chokarô's horse.

Early 19th century

Emerging from a double gourd and placing its forelegs on the bottom half of the gourd.

Height 3.7 cm

Provenance

Through Grete Damm, Munich
Coll. no. 934 (printed and handwritten)

€ 500 – 600



348



349

348 **A good Tomotada-style ivory netsuke of a recumbent cow with calf.** Early 19th century

Lying with legs folded beneath and head turned to the right, the long rope trailing over the length of its back, with a calf lying in front, curiously raising its head with mouth slightly open. The cow's eye pupils of black horn. Inscribed Tomotada in a rectangular reserve.

Height 2.5 cm; length 6.3 cm

Provenance

Purchased from Helmut Laudenbach, Berg, 12.9.1978

Coll. no. 667 (handwritten)

€ 1.000 – 1.400

349 **A fine and interesting Nagoya wood netsuke of an ox and a goat, by Masayoshi.** Mid-19th century

The recumbent ox with legs folded beneath, the head turned to the left, the long-haired goat standing at its side with forelegs placed over the oxen's back. The eyes of the ox of bone and brown horn. Signed Masayoshi.

The subject represents the zodiacal combination for the hours 1 to 3 in the morning and in the afternoon.

Height 2.3 cm; length 4.2 cm

Provenance

Coll. no. 926 (handwritten)

€ 700 – 900



350

350 A good ivory netsuke of a recumbent ox and herd boy. Early 19th century

Lying with legs folded beneath and head turned to the right, the long rope trailing over the length of its back, with a boy standing beside the animal and grabbing at the thick rope encircling the head, the boys basket behind the ox. The animal's eye pupils of brown horn.

Height 2.9 cm; length 5.5 cm

Provenance

Purchased from J. van Daalen, Utrecht, December 1972

Coll. no. 923 (printed and handwritten)

€ 700 – 900



351

351 A good ivory netsuke of a recumbent ox. Early 19th century

Lying with legs folded beneath, the head turned to the left, the long rope attached to a ring trailed over the whole length of its back. The eye pupils of brown horn. Inscribed Tomotada in a rectangular reserve.

Height 2.1 cm; length 5.2 cm

Provenance

Purchased from the estate of Dr. Franz Weber, Vienna, 1.10.1961

Coll. no. 624 (printed and handwritten)

€ 700 – 900



352

352 A wood netsuke of a boar, by Shinzan. Mid-20th century

Recumbent with one foreleg slightly raised, the head lifted and the eyes wide open. The eye pupils of black horn, the tusks of bone. Signed Shinzan in an oval reserved from the fur.

Sakai Shinzan (1904-1968), son of Sakai Masakiyo (1875-1955), followed the Masanao tradition of Ise. Height 2.7 cm; length 4.3 cm

Provenance

Purchased from Ohmura, Hamburg, March 1972

Coll. no. 891 (printed and handwritten)

€ 500 – 600



353 **A good Gifu school wood netsuke of a goat, by Yukikazu.**
Mid-19th century

Recumbent with legs neatly folded beneath, the head with two curved horns turned back, the long beard spread out onto the haunch, the fur with fine hairline engraving. The eye pupils of light and black horn. Signed Yukikazu in an oval reserve.

Height 2.7 cm; length 4.5 cm

Provenance

Purchased from Ohmura, Hamburg, March 1972
Coll. no. 892 (printed and handwritten)

€ 1.500 – 2.000



354

354 A good wood netsuke of a goat. Mid-19th century

Seated with forelegs placed close together, the head with two long thin horns turned back, the long beard hanging down over the back. The eye pupils of black horn.

Height 3.5 cm; length 4.2 cm

Provenance

Purchased from Helmut Laudenbach, Berg, October 1978

Coll. no. 698 (handwritten)

€ 600 – 800



355

355 A good large ivory netsuke of a piebald dog.

Early 19th century

Seated on its hind legs, the head lowered and turned to the left, with a thick collar band tied into a bow, the long tail neatly laid around. The eye pupils of black horn.

Height 4.3 cm

Provenance

Purchased from Helmut Laudenbach, Berg, 19.8.1986

Coll. no. 473 (handwritten)

€ 900 – 1.200



356

356 An ivory netsuke of a long-haired dog.

Early 19th century

Sitting on its hind legs on a branch with large leaves, a peony blossom and a peony bud, raising its forepaw above the flower, the hair strands neatly arranged on both sides of the spine.

Height 3.7 cm

Provenance

Through Grete Damm, Munich, May 1983

Coll. no. 519 (handwritten)

€ 700 – 900



357



358



359

357 **An attractive boxwood netsuke of a dog.** Early 19th century

Sitting on its hind legs with its head turned back, wearing a simple collar band, the long tail rolled into a spiral. Height 6.1 cm

Provenance
Coll. no. 849 (printed)

€ 400 – 500

358 **A stained ivory netsuke of a group of fifteen puppies.** Late 19th century

Crawling over each other on an outspread straw mat. All eye pupils of black horn.

In the style of Seimin, who mainly carved groups of frogs. Height 2.3 cm; length 5.8 cm

Provenance
Purchased from Helmut Laudenbach, Berg, November 1981
Coll. no. 541 (handwritten)

€ 400 – 500

359 **An ivory netsuke of two dogs.** Early 19th century

Seated on its hind legs, the larger animal protectively places its forepaws on the puppy crouching in front of it. Height 4.3 cm

Provenance
Purchased from Helmut Laudenbach, Berg, February 1979
Coll. no. 767 (handwritten)

€ 300 – 400



360



361



362

360 An ivory netsuke of a small skinny dog. 19th century

Reclining on a large round cushion with a central opening for a himotōshi, scratching its chin with a hind paw.

Height 1.9 cm; diameter 3.9 cm

Provenance

Purchased from Helmut Laudenbach, Berg, February 1979
Coll. no. 802 (handwritten)

€ 400 – 500

361 A good ivory netsuke of a reclining tiger. Early 19th century

With forepaws placed close together, scratching its chin with its hind paw, the head turned to the right and the long thin tail placed over the back.

Height 2.5 cm; width 4.5 cm

Provenance

Through Grete Damm, Munich, August 1979
Coll. no. 998 (handwritten)

€ 800 – 1.200

362 Two ivory netsuke of dogs. 19th/20th century

a) A piebald puppy biting the thong of a discarded straw sandal, the eye pupils of black glass, signed Kangyoku (= Tachihara Kangyoku, born 1944), and b) two playing puppies. (2)
Height a) 2.5 cm; b) 2.2 cm

Provenance

a) Purchased from Helmut Laudenbach, May 1999; coll. no. 426 (handwritten); b) purchased from Ohmura, Hamburg, December 1966; coll. no. 844 (printed)

€ 400 – 500

363 **An unusually large stag antler netsuke of a wolf.**
19th century

Crouching and lowering its head to a branch with
fruits and two large leaves.
Height 4.7 cm; length 6.7 cm

Provenance

Purchased from Ohmura, Hamburg, 1972

Coll. no. 900 (printed and handwritten)

€ 400 – 600



363

364 **A good large ivory netsuke of a snarling tiger.**
Early 19th century

Sitting on its haunches with paws placed wide apart,
the head turned to the right and the long thin tail
placed over the back, the fur with thin curved stripes
reserved from the fine hair engraving. The eye pupils
of brown horn.
Height 4.5 cm

Provenance

Purchased from Helmut Laudenbach, Berg,

20.11.1986

Coll. no. 471 (handwritten)

€ 1.000 – 1.500



364

365 **A kagamibuta of a tiger.** Mid-19th century

The disc of silver displaying a tiger and its young in
billowing waves. The bowl of ivory with eyelet and
loose ring of silver.
Diameter 4.8 cm

Provenance

Purchased from Alexander Pollmer, Munich, 1974

Coll. no. 712 (handwritten)

€ 300 – 400



365



366

366 An unusual umimatsu netsuke of a tiger.
19th century

Reclining cat-like with forepaws placed close together, the long thin tail placed over its back, the head lowered, the mouth open.
Height 2.5 cm; width 3.9 cm

Provenance
Purchased from Ohmura, Hamburg
Coll. no. 693 (printed)

€ 300 – 400



367

367 An unusual wood seal-type netsuke of a tiger.
19th century

Standing with forepaws placed close together, the long thin tail placed between the hind legs and hanging down over the high tapering base decorated with a meander border. Inscribed Minko with kaô.
Height 4.3 cm

Provenance
Purchased from Alexander Pollmer, 1974
Coll. no. 969 (printed and handwritten)

€ 300 – 400

368 **An unusual ivory netsuke of a rat.**

First half 19th century

Sitting on its tail, the rat wears a jacket with a chrysanthemum pattern and places its left forepaw on the upright handle of Daikoku's hammer. The eye pupils of black and brown horn. Signed Shige?masa. Height 3.1 cm

Provenance

Purchased from Alexander Pollmer, Munich, August 1972

Coll. no. 906 (printed and handwritten)

€ 400 – 500



368

369 **An ivory netsuke of three playing rats.**

First half 19th century

The mother rat sits at the centre while one young animal lies on its back in front of her and the other sits on the mother's back. The eye pupils of black and brown horn. Height 3.2 cm

Provenance

Purchased from J. van Daalen, Utrecht, April 1970

Coll. no. 778 (printed and handwritten)

€ 300 – 500



369



370



371



372



373

370 A large boxwood netsuke of a rat. Second half 19th century

Sitting on a large bag and trying to get inside by sticking its head into the knotted cloth. Inscribed Masanao.
Height 3.6 cm; length 5.6 cm

Provenance

Purchased from Helmut Laudenbach, Berg, 3.7.1979
Coll. no. 990 (handwritten)

€ 500 – 700

371 A boxwood netsuke of a young rat. Mid-19th century

Sitting on top of a large bag, possibly belonging to Daikoku, its tail hanging down. The small eye pupils of black horn.
Height 4.1 cm

Provenance

Purchased from Alexander Pollmer, Munich, August 1972
Coll. no. 912 (printed and handwritten)

€ 500 – 700

372 An Ise school boxwood netsuke of a rat with a fruit. Second half 19th century

Sitting with tail coiled around its body, nibbling at a fruit held with both forepaws. The eye pupils of black horn. Inscribed Masanao in an oval reserve.
Height 2.5 cm; width 3.3 cm

Provenance

Purchased from Helmut Laudenbach, Berg, March 1980
Coll. no. 584 (handwritten)

€ 300 – 400

373 A boxwood netsuke of a large rat. Second half 19th century

Sitting, the tail slung around its body, the paws clutching the tail. The large eye pupils of black horn. Inscribed Masanao.
Height 2.2 cm; length 4.8 cm

Provenance

From Grete Damm, Munich, November 1980
Coll. no. 566 (handwritten)

€ 500 – 700



374



375



376



377

374 A large Ise school okimono-type boxwood netsuke of a rat, by Masanao. Late 19th century

Sitting with hind paws placed on the tail curled around the body, biting into a bean pod which the rat holds with both hands. The eye pupils of black horn. Signed Masanao. Height 3,6 cm; length 5,6 cm

Provenance

A birthday gift from the company employees, 1.7.1990, purchased from Helmut Laudenbach, Berg Coll. no. 447 (handwritten)

€ 700 – 900

375 A large boxwood netsuke of a rat with a scroll, by Shigemasa. Mid-19th century

Sitting on its tail, a scroll in its mouth, and holding onto the cord wound around the scroll and hanging down. The eye pupil of light grey horn. Signed Shigemasa in ukibori in a rectangular reserve. Height 3,6 cm

Provenance

Purchased from Alexander Pollmer, Munich ? Coll. no. 929 (printed and handwritten)

€ 600 – 800

376 An Ise school boxwood netsuke of a rat rolled into a ball, by Sakai Masakiyo. First half 20th century

The eye pupils of black horn. Signed Masakiyo in an area reserved from the fine hairline engraving. Height 3,2 cm

Provenance

Eskenazi, London; Collection George A Cohen, Birmingham, England Purchased from Helmut Laudenbach, Berg, 3.7.1979, Coll. no. 992 (handwritten)

Literature

George Cohen, In search of Netsuke & Inro, Birmingham 1974, plate XIV, no. 231

€ 700 – 900

377 A large black wood netsuke of a rat rolled into a ball

Scratching its ear and placing the other forepaw over its leg, one hind paw shaped into a fist, the other clutching the tail. The eye pupils of black horn. Inscribed Masanao in a rectangular reserve. Height 4,4 cm

Provenance

Purchased from Helmut Laudenbach, Berg, 22.2.1985 Coll. no. 495 (handwritten)

€ 800 – 1.200



378



379

378 **A stag antler netsuke of a rat on a bamboo shoot.**
19th century

Sitting with a trailing tail on a long bamboo shoot, carved from a separate piece and attached to the shoot. The eye pupils of black horn.

Length 8.7 cm

Provenance

Purchased from Helmut Laudenbach, Berg, February 1997
Coll. no. 435 (printed and handwritten)

€ 400 – 600

379 **An attractive ivory netsuke of a squirrel on ferns.**
Early 19th century

Sitting with a bushy tail on a bed of ferns surrounded by three mushrooms of various sizes. One eye pupil of black horn, the other of brown horn.

Length 7.9 cm

Provenance

Purchased from Helmut Laudenbach, Berg, August 1980
Coll. no. 570 (handwritten)

€ 400 – 600

380 **A fine ivory netsuke of a rabbit.**
19th century

Seated with head lowered and paws placed close together. The eye pupils of black horn.
Height 3.2 cm

Provenance
Through Grete Damm, Munich, July 1982
Coll. no. 530 (handwritten)

€ 800 – 1.000



380

381 **A small boxwood netsuke of a rabbit.**
19th century

Crouching and almost shaped into a ball, head resting on its forepaws. The eye pupils of coral? Signed Tô...?
Height 2.9 cm

Provenance
Purchased from Helmut Laudenbach, Berg,
February 1979
Coll. no. 787 (printed and handwritten)

€ 300 – 400



381



382

- 382 **An attractive ivory netsuke of three rabbits.**
Mid-19th century

Seated close together with heads lowered or raised and looking in different directions. All eye pupils of coral.

Height 1.9 cm; length 4.2 cm

Provenance

Purchased from the estate of Dr. Franz Weber,
Vienna, 1.10.1961

Coll. no. 625 (printed and handwritten)

€ 400 – 600



383

- 383 **An unusual bone netsuke of a chubby rabbit.**
19th century

Seated with head raised. The eye pupils of stone.
Height 3 cm

Provenance

Purchased from J. van Daalen, Utrecht, March 1966
Coll. no. 741 (handwritten)

€ 300 – 400



384

- 384 **An unusual corozo nut netsuke of a crouching rabbit.** 19th century

With head lowered and licking its forepaw, the skin of the nut cleverly used to represent spots in the hare's fur. The eye pupils of coral? Together with an ivory ojime carved with four hares and a full moon.
Height 2.9 cm; length 4.2 cm

Provenance

From Emil Damm, Munich ?

Coll. no. 965 (printed and handwritten)

€ 400 – 500

385 **A marine ivory tusk seal netsuke of a frog, by Kinryū.** Second half 19th century

Engraved with a frog jumping up to reach for a sloping branch of a willow, and inscribed with a poem. At the base a four-character seal in relief. Signed Kinryū tō.

The design is an allusion to Ono no Tofu who tried seven times to obtain a higher post in court but did not succeed. When he saw that a frog only reached a willow branch at the eighth attempt, he took courage again and eventually rose to the highest rank under emperor Murakami.

Height 7.8 cm

Provenance

Purchased from Ohmura, Hamburg, April 1969
Coll. no. 785 (printed and handwritten)

€ 300 – 400



385

386 **An Ise school boxwood netsuke of a toad on a bucket, by Masanao.** Mid-19th century

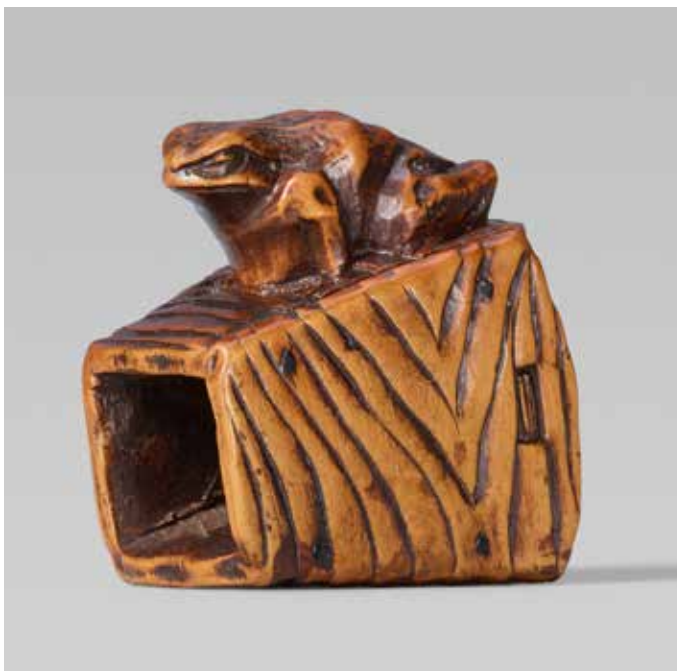
Sitting with head turned slightly to the left on a discarded well bucket, its base lost. The nails of the bucket of black horn. Signed Masanao.

Height 3.3 cm; length 3 cm

Provenance

Purchased from Ohmura, Hamburg, 1972
Coll. no. 898 (printed and handwritten)

€ 400 – 500



386



387

387 **A boxwood netsuke of a toad.** Mid-19th century

Squatting in typical pose with head turned slightly to the left. The eyes of light and dark horn.
Height 2.8 cm; length 5.3 cm

Provenance

Through Grete Damm, Munich, 18.11.1978
Coll. no. 755 (handwritten)

€ 400 – 700



388

388 **A boxwood netsuke of a toad.** Mid-19th century

Squatting in typical pose with head turned to the left. The elliptical eyes of dark horn.
Height 3.1 cm; length 4.5 cm

Provenance

Purchased from Ohmura, Hamburg, August 1972
Coll. no. 896 (printed and handwritten)

€ 400 – 500



389

389 **A large and unusual boxwood netsuke of a frog on a bamboo shoot.** 19th century

Sitting on a fat bamboo shoot with a twisted tip and very large protruding root scars at the base.
Height 3.1 cm; length 5.3 cm

Provenance

Purchased from Ohmura, Hamburg, November 1965
Coll. no. 775 (printed and handwritten)

€ 600 – 800



390



391



392

390 **A good and large boxwood netsuke of a snail.** 19th century

Crawling out from its house, the antennae extended over the ribbed shell, the twisted mantle forming the himotōshi.

Height 2.3 cm; length 4.3 cm

Provenance

Through Grete Damm, Munich, 1975

Coll. no. 953 (printed and handwritten)

€ 800 – 1.000

391 **A good boxwood netsuke of a snail.** 19th century

With a finely textured body and outspread antennae, the snail crawls over a large leaf, on the underside a second leaf folded-over and twigs.

Height 2.6 cm; length 4.7 cm

Provenance

Through Grete Damm, Munich?

Coll. no. 953 (printed and handwritten)

€ 600 – 800

392 **A highly polished tusk netsuke with a centipede.** 19th/20th century

The natural shape of the pointed tusk is carved with a centipede. The eyes of black horn.

Length 8.7 cm

Provenance

Purchased from Helmut Laudenbach, Berg, 7.4.1987

Coll. no. 459 (handwritten)

€ 300 – 500



393

393 **An ivory peg ryûsa manjû of a long-tailed phoenix.** Mid-19th century

With a short cockerel's crest, large breast feathers, wide wings and long tail feathers.
Diameter 4.3 cm

Provenance

Coll. no. 982 (printed and handwritten)

€ 600 – 700



394

394 **A large boxwood netsuke of an eagle.** Early 19th century

Perched on a rock, the head lowered, the large feathers on the back and wings rendered in engraving.

Height 4.7 cm

Provenance

Purchased from Ohmura, Hamburg,
November 1965

Coll. no. 774 (printed and handwritten)

€ 400 – 500



395 **A rare walrus tusk netsuke of an owl.** 19th century

Perched on a short tree trunk with a short branch growing sideways, the pointed ears laid back flat for compactness, the feathers and wings neatly carved.

Height 3.8 cm

Provenance

Through Grete Damm, Munich, October 1982

Coll. no. 598 (handwritten)

€ 900 – 1.200



396

- 396 **An elegant ivory netsuke of a duck, in the style of Mitsuhiro.** Second half 19th century or later

Of slightly stylised shape, the head turned back and the beak placed on the wings as if preening. The eye pupils of dark brown horn.

Height 3 cm; length 5.1 cm

Provenance

Through Grete Damm, Munich, March 1983

Coll. no. 524 (handwritten)

€ 600 – 700



397

- 397 **A very large ivory netsuke of a cockerel.** 19th century

Seated with legs folded under, head turned slightly to the right and tail feathers raised to a high loop, the cockscomb and wattles feature prominently while the neck, wing, body and tail feathers are carved realistically. The eye pupils of black horn.

Height 4.6 cm

Provenance

Purchased from Helmut Laudenschlag, Berg,

February 1978

Coll. no. 630 (handwritten)

€ 900 – 1.200



398

- 398 **A rare stained ivory netsuke of a long-tailed bird, by Ashitomo.** First half 19th century

Perched on a double gourd and looking back. The eye pupils of black horn. Signed Ashitomo in an irregular reserve.

Height 4 cm

Provenance

Through Emil Damm, Munich

Coll. no. 956 (printed and handwritten)

€ 600 – 700

399 **A small Kyoto school ivory netsuke of a fukura suzume.** Late 18th century

The stylised sparrow sits with tail erect and wings spread out, looking straight ahead. The eye pupils of black horn. Inscribed Masanao in an oval reserve.

Height 2.1 cm; width 4.1 cm

Provenance

Purchased from Alexander Pollmer, Munich, September 1972

Coll. no. 917 (printed and handwritten)

€ 600 – 800



399

400 **An ivory netsuke of a fukura suzume.** 19th century

The stylised sparrow sits with tail erect and wings spread out, the body contours almost forming a circle, the head turned to the right. The eye pupils of brown horn. Inscribed Yoshinaga in an oval reserve.

Height 2.4 cm; width 4.8 cm

Provenance

A gift from Emil Damm

Coll. no. 942 (printed and handwritten)

€ 700 – 900



400



401

401 A rare lacquered yew wood netsuke of a bat, by Sukenaga. Second half 19th century

Carved in ittôbori with wings folded, the body and wings lacquered black, the underside lacquered red and gold. Signed Sukenaga.

Height 3.3 cm

Provenance

Purchased from Ohmura, Hamburg, September 1967
Coll. no. 616 (printed and handwritten)

€ 400 – 500



402

402 A rare ivory netsuke of a moth, by Shôsai. Early 20th century

Of triangular shape, the wings covering the subsidiary wings and body. The large eyes with pupils of black horn. Signed Shôsai.

Saitô Toshikazu Shôsai (?-1970) was born in Tokyo and was the father of Saitô Bishû.

Height 4.4 cm

Provenance

Purchased from Ohmura, Hamburg, June 1971
Coll. no. 875 (printed and handwritten)

€ 400 – 500



403

403 A fine large walnut netsuke of cranes. Mid-19th century

Both halves of the nut carved partly in openwork with a flying crane amidst cloud swirls. The eye pupils inlaid black.

Height 4.6 cm

Provenance

Through Grete Damm, Munich, October 1981
Coll. no. 545 (handwritten)

€ 400 – 500

404 **An interesting Osaka school ryûsa manjû of fish, by Masahiro.** Around 1860/1870

Carved in openwork with a multitude of different fish, an octopus, a squid and a clam. Two eye pupils of black horn. Signed Masahiro and seal.

Meinertzhagen was not sure how to read the seal, he reads it Hôsai, but also Shosai (MCI, p. 414-415).
Height 2.2 cm; width 4.8 cm

Provenance

Purchased from Helmut Laudenschlager, Berg,
20.11.1086
Coll. no. 467 (printed and handwritten)

€ 900 – 1.200



404

405 **A good ivory netsuke of a carp leaping up a waterfall, by Masatoshi.** Mid-19th century

Ascending from foaming waves, the head ploughing through the cascading waters. One eye pupil of black horn lined with silver wire. Signed Masatoshi with kaô in a raised reserve.

Height 3.2 cm

Provenance

Through Grete Damm, Munich, December 1980
Coll. no. 564 (handwritten)

€ 900 – 1.200



405

406 **An unusual wood and negoro lacquer netsuke of two carps.** 19th century

Swimming amidst foaming waves and a single rock. The fish covered with negoro lacquer, the eyes and some of the water drops in gold lacquer.

Height 2.2 cm; width 4.3 cm

Provenance

Coll. no. 723 (printed and handwritten)

€ 400 – 600



406

407 **A large boxwood netsuke of a carp leaping up a waterfall, by Masakiyo.**
Early 20th century

Ascending from foaming waves, the head ploughing through the cascading waters. The inside completely hollowed out. The eye pupils of black horn. Signed Masakiyo.

Sakai Masakiyo (1875-1955) followed the style of Suzuki Masanao of Ise. Masakiyo carved this subject several times following the design of Masanao (MCI, p. 459).

Height 5.3 cm

Provenance

A birthday gift from Grete Damm,
Munich, 1.7.1993
Coll. no. 441 (handwritten)

€ 3.000 – 5.000





408



409



410

408 **A good boxwood netsuke of a dried salmon.** First half 19th century

With a ferociously open mouth, hollow eyes and a crumpled scaly skin with short straight fins.

Length 9.8 cm

Provenance

Purchased from J. van Daalen, Utrecht, March 1966
Coll. no. 803 (printed and handwritten)

€ 600 – 800

409 **An interesting and rare umimatsu netsuke of an eel.** 19th century

Swimming, the tail fin slightly swinging to the right. The eyes of bone. Length 15.4 cm

Provenance

Hauswedell, Hamburg, 31.5.1965, lot 44
Coll. no. 692 (printed and handwritten)

€ 400 – 500

410 **A fine and rare umimatsu netsuke of a fish, probably a carp.** 19th century

Swimming, the scaly body slightly twisted and tail fin raised, the mouth open. The amber-coloured spots allude to the gold-skinned koi. The eyes of mother-of-pearl and horn. Length 13 cm

Provenance

Through Grete Damm, Munich, July 1978
Coll. no. 751 (handwritten)

€ 700 – 900



411

- 411 **An unusual and interesting greyish horn netsuke of a catfish and a gourd.** Second half 19th century

With a flat head, a slender double gourd alongside the body and held in place by the curved tail. The eye pupils of bone and black horn.
Height 1.2 cm; length 7.6 cm

Provenance

Through Emil Damm, Munich ?

Coll. no. 952 (handwritten)

€ 700 – 900



412

- 412 **An interesting and rare reticulated silver fish, probably a carp.** Late 19th century

The scaly body consists of nine hinged elements with a reticulated back fin, the head functions as a lid to a small compartment, in the mouth a gilded pearl with an eyelet for a cord. The eye pupils of faceted bluish glass.

Length 12 cm

Provenance

Purchased from Ohmura, Hamburg, November 1966

Coll. no. 835 (handwritten)

€ 400 – 500



413

- 413 **An amusing boxwood netsuke of an octopus riding on a catfish, by Masakazu.** Late 19th century

Sitting on top of the earthquake fish and holding it down with all of his tentacles, whilst the fish swishes its tail fin wildly. The eye pupils of bone and black horn, the ones of the catfish of black glass, the himotôshi lined with bone. Signed Masakazu on an inlaid oval bone tablet.

Height 3.8 cm; length 4.9 cm

Provenance

Purchased from J. van Daalen, Utrecht,

December 1965

Coll. no. 743 (printed and handwritten)

€ 500 – 800

- 414 **A flat oval ivory ryūsa manjū of mushrooms, pine cones and leaves.** Mid-19th century

Carved with an autumnal arrangement of mushrooms and pine cones, a maple leaf to one side, and a ginkgo and an oak leaf to the other side.
Length 4.4 cm

Provenance

A gift from Grete Damm, September 1978
Coll. no. 683 (printed and handwritten)

€ 300 – 400



414

- 415 **An ivory netsuke of a gourd vine.**
Early 19th century

Five double gourds hanging from stems with very large leaves are arranged into a compact shape, perforated with large holes and hollowed out at the base.

Height 4.1 cm

Provenance

Through Emil Damm? 1973
Coll. no. 958 (printed and handwritten)

€ 400 – 500



415

- 416 **An ivory netsuke of a pumpkin with a small rat.**
First half 19th century

A rat sits on a large horizontal pumpkin (uri), the strong stem arranged into a loop which forms the himotōshi. The eyes of brown horn.
Length 5.3 cm

Provenance

Purchased from Helmut Laudenbach, Berg,
March 1983
Coll. no. 522 (handwritten)

€ 350 – 450



416



417



418



419



420

417 A wood netsuke of two bean pods. 19th century

Placed across each other, with two leafy twigs lying on the upper bean pod. Remains of transparent lacquer. Inscribed Shūzan.

Length 5.8 cm

Provenance

A birthday gift from Grete Damm, 1.7.1979

Coll. no. 997 (handwritten)

€ 300 – 400

418 A black wood netsuke of an eggplant and a small rat.

First half 19th century

A rat sits on top of an eggplant with a very large veined leaf hanging from its stem.

Height 4 cm

Provenance

Purchased from Helmut Laudenbach, Berg, 12.9.1978

Coll. no. 680 (handwritten)

€ 300 – 400

419 A flat stag antler netsuke of a ginkgo leaf and nuts.

Mid-19th century

Nestled between two large ginkgo leaves with a small nut visible at each end which also function as a plug, a further larger ginnan placed on top of one of the leaves.

Length 4.4 cm

Provenance

Purchased from the estate of Dr. Franz Weber, Vienna, 1.10.1961

Coll. no. 621 (printed and handwritten)

€ 300 – 400

420 A boxwood netsuke of three chestnuts. Early 19th century

One upright and one horizontally placed chestnut with a maggot inside are positioned on top of a flattened nut.

The maggot of bone, its head of horn.

Length 4.4 cm

Provenance

Purchased from Helmut Laudenbach, Berg, December 1980

Coll. no. 563 (handwritten)

€ 400 – 500



421



422



423

421 **A large stained wood netsuke of three walnuts and two soy beans, by Unkoku.** Late 19th century

Three walnuts with tips pointing upwards are arranged close together on top of two soy bean pods, one split open to reveal three beans. Signed Unkoku.

Height 3.5 cm

Provenance

Purchased from Helmut Laudenbach, Berg, August 1980
Coll. no. 574 (handwritten)

€ 400 – 500

422 **A boxwood manjū-type netsuke of a kaki.** 19th century

The upper side is carved as a kaki with sepals and a short stem, embellished with two crawling ants in black and white lacquer, the lower side is flat and plain.

Height 1.8 cm; length 4.5 cm

Provenance

Purchased from Helmut Laudenbach, Berg, 12.9.1978
Coll. no. 681 (handwritten)

€ 300 – 400

423 **A long stag antler sashi-type netsuke of reishi.** Second half 19th century

The three long stems bearing stylised cloud-shaped heads, to one side a young reishi with a barely developed head.

Length 16.5 cm

Provenance

Purchased from Helmut Laudenbach, Berg, December 1980
Coll. no. 561 (handwritten)

€ 300 – 400



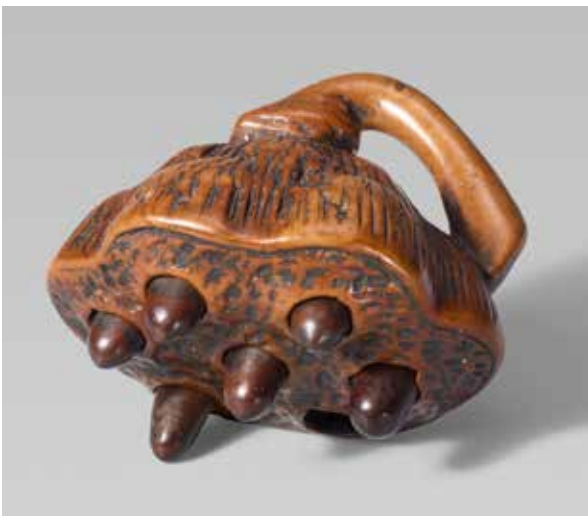
424

- 424 **A small ivory netsuke of a peony blossom.**
Second half 19th century

Attached to a branch with two large leaves growing from separate twigs.
Height 1.8 cm; width 3.8 cm

Provenance
Through Grete Damm, May 1981
Coll. no. 553 (handwritten)

€ 300 – 400



425

- 425 **A boxwood netsuke of a lotus pod.** 19th century

With seven openings and six loose seeds, the curved stem forms the himotôshi.
Height 3.2 cm

Provenance
Purchased from Ohmura, Hamburg, June 1969
Coll. no. 703 (printed and handwritten)

€ 300 – 400



426

- 426 **A kagamibuta of a plum tree and a round window.**
Mid-19th century

The disc of shibuichi with an old plum tree with young blossoming branches and the shadow of a dancing figure with a fan seen through a shôji of a round window with bamboo lattice, in iro-e takazôgan. The bowl of ivory.
Diameter 4.4 cm

Provenance
A birthday gift from Grete Damm, 1.7.1978
Coll. no. 747 (printed and handwritten)

€ 300 – 400



427



428



429



430

- 427 **An ivory netsuke of a group of three seals.**
Mid-19th century

All seal knobs carved in shape of a shishi resting on a flat base, one of them placing its forepaws onto a mokugyo. The characters on the largest seal read koku and un. Height 2.5 cm; length 5.5 cm

Provenance
Purchased from Alexander Pollmer, Munich
Coll. no. 937 (printed and handwritten)

€ 400 – 600

- 428 **A very large and fine Edo school netsuke of an Okame mask, by Gyokkō.** Mid-19th century

With typical features such as crescent-shaped eyes, cheeks with dimples, and a small open mouth with a visible upper row of teeth. Height 6 cm

Provenance
Purchased from Helmut Laudenbach, Berg, 19.8.1986
Coll. no. 475 (handwritten)

€ 500 – 600

- 429 **A large Tomotada-type boxwood netsuke of a shishimai mask.** Early 19th century

The square-shaped head with bulging eyes and a flat nose, covered all over with tufts and locks of hair, the lower jaw opens downwards to reveal a tongue and an upper and lower row of teeth. Height 4.7 cm

Provenance
Purchased from Julius Katchen, September 1970
Coll. no. 661 (printed and handwritten)

€ 600 – 900

- 430 **An interesting large ivory peg manjū of the station names of the Kisō Road.** Late 19th century

Incised on the front side with a bird flying by a camellia and 28 cartouches with station names, the reverse with 34 cartouches with station names and the title reading Kisō kaidō rokujūkyū tsugi. Diameter 5.4 cm

Provenance
Purchased from Helmut Laudenbach, Berg, 14.9.1985
Coll. no. 486 (printed and handwritten)

€ 300 – 500



431

431 A very fine and highly realistic ivory model of a skull, by Toshinaga.

Late 19th century

The human skull with various sutures, huge eye sockets and closed jaws, only a few teeth missing from the upper and lower rows of teeth. Signed Toshinaga with kaō.

Height 4.1 cm

Provenance

Purchased from Helmut Laudenbach, Berg, March 1980

Coll. no. 585 (handwritten)

€ 2.000 – 3.000



432

432 A fine and realistic ivory model of a skull.

Late 19th century

The human skull with various sutures, huge squarish eye sockets and closed jaws, only a few teeth missing from the upper and lower rows of teeth.

Height 3.8 cm

Provenance

Purchased from Alexander Pollmer, July 1975

Coll. no. 701 (handwritten)

€ 1.200 – 1.800

433 **An amusing boxwood netsuke of a skull and a skeleton.** Late 19th century

A skinny skeleton crouches on top of a skull with huge circular eye sockets and three large teeth to the upper jaw.

Height 3.7 cm

Provenance

Purchased from Helmut Laudenbach, Berg, 19.8.1986

Coll. no. 477 (printed and handwritten)

€ 300 – 500



433

434 **A macabre bone netsuke of a skull and a snake.** Late 19th century

A long slender snake winds through the eye socket of a skull with two protruding front teeth, and coils into a nearly perfect circle on top of the skull.

Height 2.8 cm

Provenance

Purchased from Alexander Pollmer, Munich,

July 1975

Coll. no. 708 (handwritten)

€ 400 – 500



434

Versteigerungsbedingungen

1. Die Kunsthaus Lempertz KG (im Nachfolgenden Lempertz) versteigert öffentlich im Sinne des § 383 Abs. 3 Satz 1 BGB als Kommissionär für Rechnung der Einlieferer, die unbenannt bleiben. Im Verhältnis zu Abfassungen der Versteigerungsbedingungen in anderen Sprachen ist die deutsche Fassung maßgeblich.

2. Lempertz behält sich das Recht vor, Nummern des Kataloges zu vereinen, zu trennen und, wenn ein besonderer Grund vorliegt, außerhalb der Reihenfolge anzubieten oder zurückzuziehen.

3. Sämtliche zur Versteigerung gelangenden Objekte können im Rahmen der Vorbesichtigung geprüft und besichtigt werden. Die Katalogangaben und entsprechende Angaben der Internetpräsentation, die nach bestem Wissen und Gewissen erstellt wurden, werden nicht Bestandteil der vertraglich vereinbarten Beschaffenheit. Sie beruhen auf dem zum Zeitpunkt der Katalogbearbeitung herrschenden Stand der Wissenschaft. Sie sind keine Garantien im Rechtsinne und dienen ausschließlich der Information. Gleiches gilt für Zustandsberichte und andere Auskünfte in mündlicher oder schriftlicher Form. Zertifikate oder Bestätigungen der Künstler, ihrer Nachlässe oder der jeweils maßgeblichen Experten sind nur dann Vertragsgegenstand, wenn sie im Katalogtext ausdrücklich erwähnt werden. Der Erhaltungszustand wird im Katalog nicht durchgängig erwähnt, so dass fehlende Angaben ebenfalls keine Beschaffenheitsvereinbarung begründen. Die Objekte sind gebraucht. Alle Objekte werden in dem Erhaltungszustand veräußert, in dem sie sich bei Erteilung des Zuschlages befinden.

4. Ansprüche wegen Gewährleistung sind ausgeschlossen. Lempertz verpflichtet sich jedoch bei Abweichungen von den Katalogangaben, welche den Wert oder die Tauglichkeit aufheben oder nicht unerheblich mindern, und welche innerhalb eines Jahres nach Übergabe in begründeter Weise vorgetragen werden, seine Rechte gegenüber dem Einlieferer gerichtlich geltend zu machen. Maßgeblich ist der Katalogtext in deutscher Sprache. Im Falle einer erfolgreichen Inanspruchnahme des Einlieferers erstattet Lempertz dem Erwerber ausschließlich den gesamten Kaufpreis. Darüber hinaus verpflichtet sich Lempertz für die Dauer von drei Jahren bei erwiesener Unrechtheit zur Rückgabe der Kommission, wenn das Objekt in unverändertem Zustand zurückgegeben wird.

5. Ansprüche auf Schadensersatz aufgrund eines Mangels, eines Verlustes oder einer Beschädigung des versteigerten Objektes, gleich aus welchem Rechtsgrund, oder wegen Abweichungen von Katalogangaben oder anderweitig erteilten Auskünften und wegen Verletzung von Sorgfaltspflichten nach §§ 41 ff. KGSG sind ausgeschlossen, sofern Lempertz nicht vorsätzlich oder grob fahrlässig gehandelt oder vertragswesentliche Pflichten verletzt hat; die Haftung für Schäden aus der Verletzung des Lebens, des Körpers oder der Gesundheit bleibt unberührt. Im Übrigen gilt Ziffer 4.

6. Abgabe von Geboten. **Gebote in Anwesenheit:** Der Bieter erhält gegen Vorlage seines Lichtbildausweises eine Bieternummer. Lempertz behält sich die Zulassung zur Auktion vor. Ist der Bieter Lempertz nicht bekannt, hat die Anmeldung 24 Stunden vor Beginn der Auktion schriftlich und unter Vorlage einer aktuellen Bankreferenz zu erfolgen. **Gebote in Abwesenheit:** Gebote können auch schriftlich, telefonisch oder über das Internet abgegeben werden. Aufträge für Gebote in Abwesenheit müssen Lempertz zur ordnungsgemäßen Bearbeitung 24 Stunden vor der Auktion vorliegen. Das Objekt ist in dem Auftrag mit seiner Losnummer und der Objektbezeichnung zu benennen. Bei Unklarheiten gilt die angegebene Losnummer. Der Auftrag ist vom Auftraggeber zu unterzeichnen. Die Bestimmungen über Widerrufs- und Rückgaberecht bei Fernabsatzverträgen (§ 312b-d BGB) finden keine Anwendung. **Telefongebote:** Für das Zustandekommen und die Aufrechterhaltung der Verbindung kann nicht eingestanden werden. Mit Abgabe des Auftrages erklärt sich der Bieter damit einverstanden, dass der Bietvorgang aufgezeichnet werden kann. **Gebote über das Internet:** Sie werden von Lempertz nur angenommen, wenn der Bieter sich zuvor über das Internetportal registriert hat. Die Gebote werden von Lempertz wie schriftlich abgegebene Gebote behandelt.

7. Durchführung der Auktion: Der Zuschlag wird erteilt, wenn nach dreimaligem Aufruf eines Gebotes kein höheres Gebot abgegeben wird. Der Versteigerer kann sich den Zuschlag vorbehalten oder verweigern, wenn ein besonderer Grund vorliegt. Wenn mehrere Personen zugleich dasselbe Gebot abgeben und nach dreimaligem Aufruf kein höheres Gebot erfolgt, entscheidet das Los. Der Versteigerer kann den erteilten Zuschlag zurücknehmen und die Sache erneut ausbieten, wenn irrtümlich ein rechtzeitig abgegebenes höheres Gebot übersehen und dies vom Bieter sofort beanstandet worden ist oder sonst Zweifel über den Zuschlag bestehen.

Schriftliche Gebote werden von Lempertz nur in dem Umfang ausgeschöpft, der erforderlich ist, um ein anderes Gebot zu überbieten. Der Versteigerer kann für den Einlieferer bis zum vereinbarten Limit bieten, ohne dies anzuzeigen und unabhängig davon, ob andere Gebote abgegeben werden. Wenn trotz abgegebenen Gebots kein Zuschlag erteilt worden ist, haftet der Versteigerer dem Bieter nur bei Vorsatz oder grober Fahrlässigkeit.

8. Mit Zuschlag kommt der Vertrag zwischen Versteigerer und Bieter zustande (§ 156 S. 1 BGB). Der Zuschlag verpflichtet zur Abnahme. Sofern ein Zuschlag unter Vorbehalt erteilt wurde, ist der Bieter an sein Gebot bis vier Wochen nach der Auktion gebunden, wenn er nicht unverzüglich nach Erteilung des Zuschlages von dem Vorbehaltzuschlag zurücktritt. Mit der Erteilung des Zuschlages gehen Besitz und Gefahr an der versteigerten Sache unmittelbar auf den Bieter/Ersteigerer über, das Eigentum erst bei vollständigem Zahlungseingang.

9. **Auf den Zuschlagspreis wird ein Aufgeld von 25 % zuzüglich 19 % Umsatzsteuer nur auf das Aufgeld erhoben, auf den über € 400.000 hinausgehenden Betrag reduziert sich das Aufgeld auf 20 % (Differenzbesteuerung).**

Bei differenzbesteuerten Objekten, die mit N gekennzeichnet sind, wird zusätzlich die Einfuhrumsatzsteuer in Höhe von 7 % berechnet.

Für Katalogpositionen, die mit R gekennzeichnet sind, wird die gesetzliche Umsatzsteuer von 19 % auf den Zuschlagspreis + Aufgeld berechnet (Regelbesteuerung).

Von der Umsatzsteuer befreit sind Ausfuhrlieferungen in Drittländer (d.h. außerhalb der EU) und – bei Angabe der Umsatzsteuer-Identifikationsnummer – auch an Unternehmen in EU-Mitgliedsstaaten. Für Originalkunstwerke, deren Urheber noch leben oder nach dem 31.12.1946 verstorben sind, wird zur Abgeltung des gemäß § 26 UrhG zu entrichtenden Folgerechts eine Gebühr in Höhe von 1,8 % auf den Hammerpreis erhoben. Die Gebühr beträgt maximal € 12.500. Nehmen Auktionsteilnehmer ersteigerte Objekte selber in Drittländer mit, wird ihnen die Umsatzsteuer erstattet, sobald Lempertz Ausfuhr- und Abnehmernachweis vorliegen. Während oder unmittelbar nach der Auktion ausgestellte Rechnungen bedürfen der Nachprüfung; Irrtum vorbehalten.

10. Persönlich an der Auktion teilnehmende Ersteigerer haben den Endpreis (Zuschlagspreis zuzüglich Aufgeld + MwSt.) im unmittelbaren Anschluss an die Auktion an Lempertz zu zahlen; Die Zahlung auswärtiger Ersteher, die schriftlich geboten haben oder vertreten worden sind, gilt unbeschadet sofortiger Fälligkeit bei Eingang binnen 10 Tagen nach Rechnungsdatum noch nicht als verspätet. Überweisungen sind in Euro zu tätigen. Der Antrag auf Umschreibung einer Rechnung auf einen anderen Kunden als den Bieter muss unmittelbar im Anschluss an die Auktion abgegeben werden. Lempertz behält sich die Durchführung der Umschreibung vor.

11. Bei Zahlungsverzug werden 1 % Zinsen auf den Bruttopreis pro Monat berechnet. Lempertz kann bei Zahlungsverzug wahlweise Erfüllung des Kaufvertrages oder nach Fristsetzung Schadensersatz statt der Leistung verlangen. Der Schadensersatz kann in diesem Falle auch so berechnet werden, dass die Sache nochmals versteigert wird und der säumige Ersteigerer für einen Mindererlös gegenüber der vorangegangenen Versteigerung und für die Kosten der wiederholten Versteigerung einschließlich des Aufgeldes einzustehen hat.

12. Die Ersteigerer sind verpflichtet, ihre Erwerbung sofort nach der Auktion in Empfang zu nehmen. Lempertz haftet für versteigerte Objekte nur für Vorsatz oder grobe Fahrlässigkeit. Ersteigerte Objekte werden erst nach vollständigem Zahlungseingang ausgeliefert. Eine Versendung erfolgt ausnahmslos auf Kosten und Gefahr des Ersteigerers. Lempertz ist berechtigt, nicht abgeholte Objekte vier Wochen nach der Auktion im Namen und auf Rechnung des Ersteigerers bei einem Spediteur einlagern und versichern zu lassen. Bei einer Selbsteinlagerung durch Lempertz werden 1 % p.a. des Zuschlagspreises für Versicherungs- und Lagerkosten berechnet.

13. Erfüllungsort und Gerichtsstand, sofern er vereinbart werden kann, ist Köln. Es gilt deutsches Recht; Das Kulturgutschutzgesetz wird angewandt. Das UN-Übereinkommen über Verträge des internationalen Warenkaufs (CISG) findet keine Anwendung. Sollte eine der Bestimmungen ganz oder teilweise unwirksam sein, so bleibt die Gültigkeit der übrigen davon unberührt.

Henrik Hanstein, öffentlich bestellter und vereidigter Auktionator
Takuro Ito, Kilian Jay von Seldeneck, Kunstversteigerer

Conditions of sale

1. The art auction house, Kunsthaus Lempertz KG (henceforth referred to as Lempertz), conducts public auctions in terms of § 383 paragraph 3 sentence 1 of the Civil Code as commissioning agent on behalf of the accounts of submitters, who remain anonymous. With regard to its auctioneering terms and conditions drawn up in other languages, the German version remains the official one.

2. The auctioneer reserves the right to divide or combine any catalogue lots or, if it has special reason to do so, to offer any lot for sale in an order different from that given in the catalogue or to withdraw any lot from the sale.

3. All lots put up for sale may be viewed and inspected prior to the auction. The catalogue specifications and related specifications appearing on the internet, which have both been compiled in good conscience, do not form part of the contractually agreed conditions. These specifications have been derived from the status of the information available at the time of compiling the catalogue. They do not serve as a guarantee in legal terms and their purpose is purely in the information they provide. The same applies to any reports on an item's condition or any other information, either in oral or written form. Certificates or certifications from artists, their estates or experts relevant to each case only form a contractual part of the agreement if they are specifically mentioned in the catalogue text. The state of the item is generally not mentioned in the catalogue. Likewise missing specifications do not constitute an agreement on quality. All items are used goods.

4. Warranty claims are excluded. In the event of variances from the catalogue descriptions, which result in negation or substantial diminution of value or suitability, and which are reported with due justification within one year after handover, Lempertz nevertheless undertakes to pursue its rights against the seller through the courts; in the event of a successful claim against the seller, Lempertz will reimburse the buyer only the total purchase price paid. Over and above this, Lempertz undertakes to reimburse its commission within a given period of three years after the date of the sale if the object in question proves not to be authentic.

5. Claims for compensation as the result of a fault or defect in the object auctioned or damage to it or its loss, regardless of the legal grounds, or as the result of variances from the catalogue description or statements made elsewhere due to violation of due diligence according to §§ 41 ff. KGSG are excluded unless Lempertz acted with wilful intent or gross negligence; the liability for bodily injury or damages caused to health or life remains unaffected. In other regards, point 4 applies.

6. Submission of bids. Bids in attendance: The floor bidder receives a bidding number on presentation of a photo ID. Lempertz reserves the right to grant entry to the auction. If the bidder is not known to Lempertz, registration must take place 24 hours before the auction is due to begin in writing on presentation of a current bank reference. Bids in absentia: Bids can also be submitted either in writing, telephonically or via the internet. The placing of bids in absentia must reach Lempertz 24 hours before the auction to ensure the proper processing thereof. The item must be mentioned in the bid placed, together with the lot number and item description. In the event of ambiguities, the listed lot number becomes applicable. The placement of a bid must be signed by the applicant. The regulations regarding revocations and the right to return the goods in the case of long distance agreements (§ 312b-d of the Civil Code) do not apply. Telephone bids: Establishing and maintaining a connection cannot be vouched for. In submitting a bid placement, the bidder declares that he agrees to the recording of the bidding process. Bids via the internet: They will only be accepted by Lempertz if the bidder registered himself on the internet website beforehand. Lempertz will treat such bids in the same way as bids in writing.

7. Carrying out the auction: The hammer will come down when no higher bids are submitted after three calls for a bid. In extenuating circumstances, the auctioneer reserves the right to bring down the hammer or he can refuse to accept a bid. If several individuals make the same bid at the same time, and after the third call, no higher bid ensues, then the ticket becomes the deciding factor. The auctioneer can retract his acceptance of the bid and auction the item once more if a higher bid that was submitted on time, was erroneously overlooked and immediately queried by the bidder, or if any doubts regarding its acceptance arise. Written bids are only played

to an absolute maximum by Lempertz if this is deemed necessary to outbid another bid. The auctioneer can bid on behalf of the submitter up to the agreed limit, without revealing this and irrespective of whether other bids are submitted. Even if bids have been placed and the hammer has not come down, the auctioneer is only liable to the bidder in the event of premeditation or gross negligence.

8. Once a lot has been knocked down, the successful bidder is obliged to buy it. If a bid is accepted conditionally, the bidder is bound by his bid until four weeks after the auction unless he immediately withdraws from the conditionally accepted bid. From the fall of the hammer, possession and risk pass directly to the buyer, while ownership passes to the buyer only after full payment has been received.

9. Up to a hammer price of € 400,000 a premium of 25 % calculated on the hammer price plus 19 % value added tax (VAT) calculated on the premium only is levied. The premium will be reduced to 20 % (plus VAT) on any amount surpassing € 400,000 (margin scheme).

On lots which are characterized by N, an additional 7 % for import tax will be charged.

On lots which are characterized by an R, the buyer shall pay the statutory VAT of 19 % on the hammer price and the buyer's premium (regular scheme).

Exports to third (i.e. non-EU) countries will be exempt from VAT, and so will be exports made by companies from other EU member states if they state their VAT identification number. For original works of art, whose authors are either still alive or died after 31.12.1946, a charge of 1.8 % on the hammer price will be levied for the droit de suite. The maximum charge is € 12,500. If a buyer exports an object to a third country personally, the VAT will be refunded, as soon as Lempertz receives the export and import papers. All invoices issued on the day of auction or soon after remain under provision.

10. Successful bidders attending the auction in person shall forthwith upon the purchase pay to Lempertz the final price (hammer price plus premium and VAT) in Euro. Payments by foreign buyers who have bid in writing or by proxy shall also be due forthwith upon the purchase, but will not be deemed to have been delayed if received within ten days of the invoice date. Bank transfers are to be exclusively in Euros. The request for an alteration of an auction invoice to a person other than the bidder has to be made immediately after the auction. Lempertz however reserves the right to refuse such a request if it is deemed appropriate.

11. In the case of payment default, Lempertz will charge 1% interest on the outstanding amount of the gross price per month.. If the buyer defaults in payment, Lempertz may at its discretion insist on performance of the purchase contract or, after allowing a period of grace, claim damages instead of performance. In the latter case, Lempertz may determine the amount of the damages by putting the lot or lots up for auction again, in which case the defaulting buyer will bear the amount of any reduction in the proceeds compared with the earlier auction, plus the cost of resale, including the premium.

12. Buyers must take charge of their purchases immediately after the auction. Once a lot has been sold, the auctioneer is liable only for wilful intent or gross negligence. Lots will not, however, be surrendered to buyers until full payment has been received. Without exception, shipment will be at the expense and risk of the buyer. Purchases which are not collected within four weeks after the auction may be stored and insured by Lempertz on behalf of the buyer and at its expense in the premises of a freight agent. If Lempertz stores such items itself, it will charge 1 % of the hammer price for insurance and storage costs.

13. As far as this can be agreed, the place of performance and jurisdiction is Cologne. German law applies; the German law for the protection of cultural goods applies; the provisions of the United Nations Convention on Contracts for the International Sale of Goods (CISG) are not applicable. Should any provision herein be wholly or partially ineffective, this will not affect the validity of the remaining provisions.

Henrik Hanstein, sworn public auctioneer
Takuro Ito, Kilian Jay von Seldeneck, auctioneers

Conditions de vente aux enchères

1. Kunsthaus Lempertz KG (appelée Lempertz dans la suite du texte) organise des ventes aux enchères publiques d'après le paragraphe 383, alinéa 3, phrase 1 du code civil allemand en tant que commissionnaire pour le compte de dépositaires, dont les noms ne seront pas cités. Les conditions des ventes aux enchères ont été rédigées dans plusieurs langues, la version allemande étant la version de référence.

2. Le commissaire-priseur se réserve le droit de réunir les numéros du catalogue, de les séparer, et s'il existe une raison particulière, de les offrir ou de les retirer en-dehors de leur ordre.

3. Tous les objets mis à la vente aux enchères peuvent être examinés et contrôlés avant celle-ci. Les indications présentes dans le catalogue ainsi que dans la présentation Internet correspondante, établies en conscience et sous réserve d'erreurs ou omissions de notre part, ne constituent pas des éléments des conditions stipulées dans le contrat. Ces indications dépendent des avancées de la science au moment de l'élaboration de ce catalogue. Elles ne constituent en aucun cas des garanties juridiques et sont fournies exclusivement à titre informatif. Il en va de même pour les descriptions de l'état des objets et autres renseignements fournis de façon orale ou par écrit. Les certificats ou déclarations des artistes, de leur succession ou de tout expert compétent ne sont considérés comme des objets du contrat que s'ils sont mentionnés expressément dans le texte du catalogue. L'état de conservation d'un objet n'est pas mentionné dans son ensemble dans le catalogue, de telle sorte que des indications manquantes ne peuvent constituer une caractéristique en tant que telle. Les objets sont d'occasion. Tous les objets étant vendus dans l'état où ils se trouvent au moment de leur adjudication.

4. Revendications pour cause de garantie sont exclus. Dans le cas de dérogations par rapport aux descriptions contenues dans les catalogues susceptibles d'anéantir ou de réduire d'une manière non négligeable la valeur ou la validité d'un objet et qui sont exposées d'une manière fondée en l'espace d'un an suivant la remise de l'objet, Lempertz s'engage toutefois à faire valoir ses droits par voie judiciaire à l'encontre du déposant. Le texte du catalogue en langue allemande fait foi. Dans le cas d'une mise à contribution du déposant couronnée de succès, Lempertz ne remboursera à l'acquéreur que la totalité du prix d'achat payé. En outre, Lempertz s'engage pendant une durée de trois ans au remboursement de la provision en cas d'inauthenticité établie.

5. Toutes prétentions à dommages-intérêts résultant d'un vice, d'une perte ou d'un endommagement de l'objet vendu aux enchères, pour quelque raison juridique que ce soit ou pour cause de dérogations par rapport aux indications contenues dans le catalogue ou de renseignements fournis d'une autre manière tout comme une violation des obligations de diligence §§ 41 ff. KGSG sont exclues dans la mesure où Lempertz n'ait ni agi avec préméditation ou par négligence grossière ni enfreint à des obligations essentielles du contrat. La responsabilité pour dommages de la violation de la vie, du corps ou de la santé ne sont pas affectées. Pour le reste, l'alinéa 4 est applicable.

6. Placement des enchères. Enchères en présence de l'enchérisseur : l'enchérisseur en salle se voit attribuer un numéro d'enchérisseur sur présentation de sa carte d'identité. Lempertz décide seul d'autoriser ou non l'enchère. Si l'enchérisseur n'est pas encore connu de Lempertz, son inscription doit se faire dans les 24 heures précédant la vente aux enchères, par écrit et sur présentation de ses informations bancaires actuelles. Enchères en l'absence de l'enchérisseur : des enchères peuvent également être placées par écrit, par téléphone ou par le biais d'Internet. Ces procurations doivent être présentées conformément à la réglementation 24 heures avant la vente aux enchères. L'objet doit y être nommé, ainsi que son numéro de lot et sa description. En cas d'ambiguïté, seul le numéro de lot indiqué sera pris en compte. Le donneur d'ordre doit signer lui-même la procuration. Les dispositions concernant le droit de rétraction et celui de retour de l'objet dans le cadre de ventes par correspondance (§ 312b-d du code civil allemand) ne s'appliquent pas ici. Enchères par téléphone : l'établissement de la ligne téléphonique ainsi que son maintien ne peuvent être garantis. Lors de la remise de son ordre, l'enchérisseur accepte que le déroulement de l'enchère puisse être enregistré. Placement d'une enchère par le biais d'Internet : ces enchères ne seront prises en compte par Lempertz que si l'enchérisseur s'est au préalable inscrit sur le portail Internet. Ces enchères seront traitées par Lempertz de la même façon que des enchères placées par écrit.

7. Déroulement de la vente aux enchères. L'adjudication a lieu lorsque trois appels sont restés sans réponse après la dernière offre. Le commissaire-priseur peut réserver l'adjudication ou la refuser s'il indique une raison valable. Si plusieurs personnes placent simultanément une enchère identique et que personne d'autre ne place d'enchère plus haute après trois appels successifs, le hasard décidera de la personne qui remportera l'enchère. Le commissaire-priseur peut reprendre l'objet adjudiqué et le remettre en vente si une enchère supérieure placée à temps lui a échappé par erreur et que l'enchérisseur a fait une réclamation immédiate ou que des doutes existent

au sujet de l'adjudication (§ 2, alinéa 4 du règlement allemand sur les ventes aux enchères). Des enchères écrites ne seront placées par Lempertz que dans la mesure nécessaire pour dépasser une autre enchère. Le commissaire-priseur ne peut enchérir pour le dépositaire que dans la limite convenue, sans afficher cette limite et indépendamment du placement ou non d'autres enchères. Si, malgré le placement d'enchères, aucune adjudication n'a lieu, le commissaire-priseur ne pourra être tenu responsable qu'en cas de faute intentionnelle ou de négligence grave.

8. L'adjudication engage l'enchérisseur. Dans la mesure où une adjudication sous réserve a été prononcée, l'enchérisseur est lié à son enchère jusqu'à quatre semaines après la fin de la vente aux enchères ou après réception des informations dans le cas d'enchères par écrit, s'il ne se désiste pas immédiatement après la fin de la vente.

9. Dans le cadre de la vente aux enchères un agio de 25 % s'ajout au prix d'adjudication, ainsi qu'une TVA de 19 % calculée sur le agio si ce prix est inférieur à € 400.000; pour tout montant supérieur à € 400.000 la commission sera diminuée à 20 % (régime de la marge bénéficiaire).

Dans le cas des objets soumis au régime de la marge bénéficiaire et marqués par N des frais supplémentaires de 7% pour l'importation seront calculés.

Pour les position de catalogue caractérisée par R, un agio de 24% est prélevé sur le prix d'adjudication ce prix facture net (prix d'adjudication agio) est majoré de la T.V.A. légale de 7% pour les tableaux, graphiques originaux, sculptures et pièces de collection, et de 19 % pour les arts décoratifs appliqués (imposition régulière).

Sont exemptées de la T.V.A., les livraisons d'exportation dans des pays tiers (en dehors de l'UE) et – en indiquant le numéro de T.V.A. intracommunautaire – aussi à destination d'entreprises dans d'autres pays membres de l'UE. Si les participants à une vente aux enchères emmènent eux-mêmes les objets achetés aux enchères dans des pays tiers, la T.V.A. leur est remboursée dès que Lempertz se trouve en possession du certificat d'exportation et d'acheteur. Pour des oeuvres originales dont l'auteur est décédé après le 31.12.1946 ou est encore vivant, conformément à § 26 UrhG concernant l'indemnisation à percevoir sur le droit de suite s'élève à 1,8% du prix adjugé. L'indemnisation ne dépassera pas un montant maximale de € 12.500. Les factures établies pendant ou directement après la vente aux enchères d'oeuvres d'art doivent faire l'objet d'une vérification, sous réserve d'erreur.

10. Les adjudicataires participant personnellement à la vente aux enchères sont tenus de payer le prix final (prix d'adjudication plus agio + T.V.A.) directement après l'adjudication à Lempertz. Le paiement par des adjudicataires externes, qui ont enchéri par écrit ou ont été représentés, est, nonobstant son exigibilité immédiate, considéré comme n'étant pas en retard à sa réception dans les 10 jours suivant la date de la facture. Les virements bancaires se font uniquement en euro. Nous n'acceptons pas les chèques. Dans le cas d'un paiement en liquide s'élevant à un montant égal à € 15.000 ou supérieur à cela, Lempertz est obligé par le § 3 de la loi concernant le blanchiment d'argent de faire une copie de la carte d'identité de l'acheteur. Ceci est valable aussi dans le cas où plusieurs factures de l'acheteur s'élèvent à un montant total de € 15.000 ou plus. Tout demande de réécriture d'une facture à un autre nom de client que celui de l'enchérisseur doit se faire directement après la fin de la vente aux enchères. Lempertz effectue la réalisation de cette nouvelle facture.

11. Pour tout retard de paiement, des intérêts à hauteur de 1 % du prix brut seront calculés chaque mois. En cas de retard de paiement, Lempertz peut à son choix exiger l'exécution du contrat d'achat ou, après fixation d'un délai, exiger des dommages-intérêts au lieu d'un service fourni. Les dommages-intérêts pourront dans ce cas aussi être calculés de la sorte que la chose soit vendue une nouvelle fois aux enchères et que l'acheteur défaillant réponde du revenu moindre par rapport à la vente aux enchères précédentes et des frais pour une vente aux enchères répétée, y compris l'agio.

12. Les adjudicataires sont obligés de recevoir leur acquisition directement après la vente aux enchères. Le commissaire-priseur n'est responsable des objets vendus qu'en cas de préméditation ou de négligence grossière. Les objets achetés aux enchères ne seront toutefois livrés qu'après réception du paiement intégral. L'expédition a lieu exclusivement aux frais et aux risques de l'adjudicataire. Lempertz a le droit de mettre des objets non enlevés en entrepôt et de les assurer au nom et pour le compte de l'adjudicataire chez un commissionnaire de transport quatre semaines après la vente aux enchères. En cas de mise en entrepôt par Lempertz même, 1% du prix d'adjudication sera facturé par an pour les frais d'assurance et d'entreposage.

13. Le lieu d'exécution et le domicile de compétence – s'il peut être convenu – est Cologne. Le droit allemand est applicable. La loi pour la protection des biens culturels est applicable. Les prescriptions du CISG ne sont pas applicables. Au cas où l'une des clauses serait entièrement ou partiellement inefficace, la validité des dispositions restantes en demeure in affectée.

Henrik Hanstein, commissaire-priseur désigné et assermenté
Takuro Ito, Kilian Jay von Seldeneck, commissaires-priseurs

LEMPERTZ

1845

Aufträge für die Auktion 1124
Asiatische Kunst, 7. Dezember 2018

Absentee Bid Form auction 1124
Asian Arts, 7 December 2018

Lot	Title	Gebot bis zu €	Highest bid price €

Die Gebote werden wir nur soweit in Anspruch nehmen, als andere Gebote überboten werden müssen. Die Aufträge sind bindend, es gelten die eingetragenen Katalognummern. Das Aufgeld und die Mehrwertsteuer sind nicht enthalten. Der Auftraggeber erkennt die Versteigerungsbedingungen an. Schriftliche Gebote sollen einen Tag vor der Auktion vorliegen.

The above listed bids will be utilized to the extent necessary to overbid other bids. The bids are binding, the listed catalogue numbers are valid. The commission and value added tax (VAT) are not included. The bidder accepts the conditions of sale. Written bids should be received by at latest the day before the auction.

Please be aware of the export regulations and conditions of sale.

Name Name

Adresse Address

Telefon Telephone

Fax

E-Mail

Evtl. Referenzen und Identifikation bei Neukunden References and identification may be required for new clients

Datum Date

Unterschrift Signature

Versand

Der Versand der ersteigerten Objekte wird auf Ihre Kosten und Gefahr nach Zahlungseingang vorgenommen.

Sie finden auf der Rechnung einen entsprechenden Hinweis bezüglich Versand und Versicherung.

Eventuell erforderliche Exportgenehmigungen können gern durch Lempertz oder einen Spediteur beantragt werden.

Bei Rückfragen: Farah von Depka
Tel +49.221.925729-19
shipping@lempertz.com

- Fedex / Post (mit Versicherung)
- Spedition
- mit Versicherung
- ohne Versicherung
- Abholung persönlich

Versand an:

Telefon / E-Mail

Rechnungsempfänger (wenn abweichend von Versandadresse)

Datum und Unterschrift

Shipment

Kunsthau Lempertz is prepared to instruct Packers and Shippers on your behalf and at your risk and expense upon receipt of payment.

You will receive instructions on shipping and insurance with your invoice.

Should you require export licenses, Lempertz or the shipper can apply for them for you.

*For information: Farah von Depka
Tel +49.221.925729-19
shipping@lempertz.com*

- Fedex / Post (with insurance)
- Shippers / Carriers
- With insurance
- Without insurance
- Personal collection

Lots to be packed and shipped to:

Telephone / e-mail

Charges to be forwarded to:

Date and signature

Mehrwertsteuer VAT

Umsatzsteuer-Identifikationsnummer des Kunsthaus Lempertz KG:
DE 279 519 593. VAT No.
Amtsgericht Köln HRA 1263.

Buchhaltung: T +49.221.92572940

Export Export

Von der Mehrwertsteuer befreit sind Ausfuhrlieferungen in Drittländer (d.h. außerhalb der EU) und – bei Angabe der Umsatzsteuer-Identifikationsnummer – auch an Unternehmen in anderen EU-Mitgliedsstaaten. Nehmen Auktionsteilnehmer ersteigerte Gegenstände selber in Drittländer mit, wird ihnen die MwSt. erstattet, sobald dem Versteigerer der Ausfuhr- und Abnehmernachweis vorliegen.

Ausfuhr aus der EU:

Bei Ausfuhr aus der EU sind das Europäische Kulturgüterschutzabkommen von 1993 und die UNESCO-Konvention von 1970 zu beachten. Bei Kunstwerken, die älter als 50 Jahre sind und folgende Wertgrenzen übersteigen, ist eine Genehmigung des Landes-kultusministeriums erforderlich:

- Gemälde ab einem Wert von 150.000 Euro
- Aquarelle, Gouachen und Pastelle ab 30.000 Euro
- Skulpturen ab 50.000 Euro
- Antiquitäten ab 50.000 Euro

Ausfuhr innerhalb der EU:

Seit 6.8.2016 gilt das neue deutsche Kulturgutschutzgesetz für Exporte auch in ein anderes EU-Land. Bei Kunstwerken, die älter als 75 Jahre sind und folgende Wertgrenzen übersteigen, ist eine Genehmigung des Landes-kultusministeriums erforderlich:

- Gemälde ab einem Wert von 300.000 Euro
- Aquarelle, Gouachen und Pastelle ab 100.000 Euro
- Skulpturen ab 100.000 Euro
- Antiquitäten ab 100.000 Euro

Die Ausfuhrgenehmigung wird durch Lempertz beim Landeskultusministerium NRW beantragt und wird in der Regel binnen 10 Tagen erteilt.
Bei Fragen wenden Sie sich bitte an: legal@lempertz.com

Mit einem † gekennzeichnete Objekte wurden unter Verwendung von Materialien hergestellt, für die beim Export in Länder außerhalb des EU-Vertragsgebietes eine Genehmigung nach CITES erforderlich ist. Wir machen darauf aufmerksam, dass eine Genehmigung im Regelfall nicht erteilt wird.

Für Rückfragen: T +49.221.92572919

Exports to third (i.e. non-EU) countries will be exempt from VAT, and so will be exports made by companies from other EU member states if they state their VAT-ID no. Persons who have bought an item at auction and export it as personal luggage to any third country will be refunded the VAT as soon as the form certifying the exportation and the exporter's identity has been returned to the auctioneer. Our staff will be glad to advise you on the export formalities.

Exports to non-EU countries:

Export to countries outside the European Community are subject to the restrictions of the European Agreement for the Protection of Cultural Heritage from 1993 and the UNESCO convention from 1970. Art works older than 50 years and exceeding the following values require an export license from the State Ministry of Culture:

- *paintings worth more than 150,000 euros*
- *watercolours, gouaches and pastel drawings more than 30,000 euros*
- *sculptures more than 50,000 euros*
- *antiques more than 50,000 euros*

Export within the EU:

As of 6.8.2016, exports within the EU are subject to the German law for the protection of cultural goods. Art works older than 75 years and exceeding the following values require an export license from the State Ministry of Culture:

- *paintings worth more than 300,000 euros*
- *watercolours, gouaches, and pastels more than 100,000 euros*
- *sculptures more than 100,000 euros*
- *antiques more than 100,000 euros*

Lempertz applies for the export licenses from the North-Rhine Westphalian State Ministry of Culture which are usually granted within 10 days.

If you have any questions, please feel free to contact: legal@lempertz.com

Objects marked † are made using materials which require a CITES licence for export outside of EU contract territory. We would like to inform you that such licences are usually not granted.

For inquiries: T +49.221.92572919

Für den Export von Kulturgütern (d.h. Kulturgüter) in Drittländer (d.h. außerhalb der EU) und – bei Angabe der Umsatzsteuer-Identifikationsnummer – auch an Unternehmen in anderen EU-Mitgliedsstaaten. Nehmen Auktionsteilnehmer ersteigerte Gegenstände selber in Drittländer mit, wird ihnen die MwSt. erstattet, sobald dem Versteigerer der Ausfuhr- und Abnehmernachweis vorliegen.

Zu den Ausfuhrerleichterungen:

Für den Export von Kulturgütern (d.h. Kulturgüter) in Drittländer (d.h. außerhalb der EU) und – bei Angabe der Umsatzsteuer-Identifikationsnummer – auch an Unternehmen in anderen EU-Mitgliedsstaaten. Nehmen Auktionsteilnehmer ersteigerte Gegenstände selber in Drittländer mit, wird ihnen die MwSt. erstattet, sobald dem Versteigerer der Ausfuhr- und Abnehmernachweis vorliegen.

- Wert über 150.000 Euro
- Wert über 30.000 Euro
- Wert über 50.000 Euro
- Wert über 50.000 Euro

Zu den Ausfuhrerleichterungen:

Für den Export von Kulturgütern (d.h. Kulturgüter) in Drittländer (d.h. außerhalb der EU) und – bei Angabe der Umsatzsteuer-Identifikationsnummer – auch an Unternehmen in anderen EU-Mitgliedsstaaten. Nehmen Auktionsteilnehmer ersteigerte Gegenstände selber in Drittländer mit, wird ihnen die MwSt. erstattet, sobald dem Versteigerer der Ausfuhr- und Abnehmernachweis vorliegen.

- Wert über 300.000 Euro
- Wert über 100.000 Euro
- Wert über 100.000 Euro
- Wert über 100.000 Euro

Der Export von Kulturgütern (d.h. Kulturgüter) in Drittländer (d.h. außerhalb der EU) und – bei Angabe der Umsatzsteuer-Identifikationsnummer – auch an Unternehmen in anderen EU-Mitgliedsstaaten. Nehmen Auktionsteilnehmer ersteigerte Gegenstände selber in Drittländer mit, wird ihnen die MwSt. erstattet, sobald dem Versteigerer der Ausfuhr- und Abnehmernachweis vorliegen.

Bei Fragen wenden Sie sich bitte an: legal@lempertz.com

Der Export von Kulturgütern (d.h. Kulturgüter) in Drittländer (d.h. außerhalb der EU) und – bei Angabe der Umsatzsteuer-Identifikationsnummer – auch an Unternehmen in anderen EU-Mitgliedsstaaten. Nehmen Auktionsteilnehmer ersteigerte Gegenstände selber in Drittländer mit, wird ihnen die MwSt. erstattet, sobald dem Versteigerer der Ausfuhr- und Abnehmernachweis vorliegen.

Signaturen und Marken Signatures and marks

Bitte gewissenhaft angeben. Sie sind eigenhändige Hinzufügungen des Künstlers oder des Herstellers. Bilder ohne Signatur oder Monogramm können nicht sicher zugeschrieben werden. – Provenienzzangaben beruhen meist auf Angaben der Einlieferer.

Signatures have been conscientiously noted. They are additions by the artists or makers in their own hand. Paintings without signature or monogram cannot be attributed definitely. – Information regarding provenance is mostly supplied by the consigner.

Location and Parking

Zu Lempertz finden Sie unter www.lempertz.com, gehen Sie auf Kontakt und dann auf Standorte; Anlieferung: Kronengasse 1; Wir empfehlen das Parkhaus Cäcilienstraße. 32. U-Bahn Station Neumarkt (Linien 1, 3, 4, 7, 9, 16, 18)

Directions to Lempertz can be found on www.lempertz.com under locations/contact. We recommend Motel One, including parking lot right next to Lempertz Delivery: Kronengasse 1 Underground station Neumarkt (Lines 1, 3, 4, 7, 9, 16, 18)

Photographie Photography

Saša Fuis Photographie, Köln

Layout und Design Layout and Design

Lemke Werbeagentur GmbH & Co. KG, Köln

Druck Print

Schefenacker Medien GmbH & Co. KG, Esslingen

Katalogbearbeitung



Drs. Erwin van Pruissen
T. +49 221 925729-37
vanpruissen@lempertz.com



Anna Chiffers M.A.
T. +49 221 925729-36
chiffers@lempertz.com



Adrian Heindricks B.A.
T +49 221 925729-74
heindricks@lempertz.com



Filialen *Branches*

Berlin
Kilian Jay von Seldeneck
Irmgard Canty M.A.
Christine Goerlipp M.A.
Melanie Jaworski
Poststraße 22
D-10178 Berlin
T +49.30.27876080
F +49.30.27876086
berlin@lempertz.com

Brüssel *Brussels*
Henri Moretus Plantin de Bouchout
Raphaël Sachsenberg M.A.
Emilie Jolly M.A.
Dr. Hélène Mund (Alte Meister)
Lempertz, 1798, SA
Grote Hertstraat 6 rue du Grand Cerf
B-1000 Brussels
T +32.2.5140586
F +32.2.5114824
bruxelles@lempertz.com

München *Munich* w
Emmarentia Bahlmann
Hans-Christian von Wartenberg M.A.
St.-Anna-Platz 3
D-80538 München
T +49.89.98107767
F +49.89.21019695
muenchen@lempertz.com

Repräsentanten *Representatives*

Mailand *Milan*
Carlotta Mascherpa M.A.
T +39.339.8668526
milano@lempertz.com

London
William Laborde
T +44.7912.674917
london@lempertz.com

Zürich *Zurich*
Nicola Gräfin zu Stolberg
T +41.44.4221911
F +41.44.4221910
stolberg@lempertz.com

Wien *Vienna*
Antonia Bahlmann B.A.
T +49.15773506823
wien@lempertz.com

Paris
Raphael Sachsenberg
T +32.488.284120
sachsenberg@lempertz.com

Kalifornien *California*
Andrea Schaffner-Dittler M.A.
T +1.650.9245846
dittler@lempertz.com

A close-up photograph of a golden Buddha head, likely a Bodhi tree, with a crown of dark beads. The Buddha's eyes are closed in a serene expression. The golden surface shows some wear and patina. The background is plain white.

LEMPERTZ

1845

Asiatische Kunst

Asian Art

7./8. Dezember 2018 Köln

Lempertz Auktion 1124

LEMPERTZ

1845

Kunstgewerbe

Auktion am 16. November 2018 in Köln

Schätze aus einer niedersächsischen Sammlung: Elfenbein und Silber

Vorbesichtigung: Köln 10. – 15. Nov.

Bedeutender Akeleipokal

Augsburg, Elias I Drentwett, um 1617. Silber; vergoldet, H 65 cm, Gewicht 1.380 g. Schätzpreis / *Estimate*: € 40.000 – 60.000,-



LEMPERTZ

1845

Schmuck

Auktion am 15. November 2018 in Köln
Vorbesichtigung: Köln 10. – 15. Nov.

Schmuckuhr „YIN & YANG“

Max Pollinger, München 1960er Jahre. 21 kt Gelbgold, Bergkristall, Mido-Automatikwerk.
Gewicht 43,3 g. Schätzpreis / *Estimate*: € 2.500 – 3.000,-



LEMPERTZ

1845



Netsuke, Inro und Sagemono
aus einer rheinischen Privatsammlung
7. Dezember 2018 Köln
Lempertz Auktion 1124

LEMPERTZ
1845

